

VIP-893 / VIP-893S IP INTERACTIVE CONSOLE

INTRODUCTION

The VIP-893 IP Interactive Console is an innovative touchscreen appliance that enables voice announcements (live or record & send) or pre-recorded audio announcements to Valcom IP audio gateways, IP speakers and horns, and IP speakers with text. Pre-defined text messages can be sent simultaneously with the recorded audio to endpoints that support both. The VIP-893 can initiate and receive intercom calls via the built-in microphone or handset from Valcom IP and SIP endpoints. The IP Interactive Console can receive and play broadcast paging announcements from other IP Valcom FXO, FXS, or SIP gateways. The VIP-893S includes basic scheduling functions to send recorded announcements and/or text messages to Valcom IP endpoints.

Applications

- Public Address / Paging Console
- Intercom Answering Station
- Emergency Alert Terminal
- Scheduled Announcements

SPECIFICATIONS

Features

- Desktop interactive IP device with 10.1" color touch screen display, loudspeaker, USB handset, and cradle attachment
- Sends pre-recorded audio files at the push of a button
- Sends microphone pages, either "Live" or Record & Send for feedback elimination
- Sends text messages to Valcom LED signs
- Makes/receives bidirectional voice calls to Valcom and SIP endpoints
- Receives audio pages
- Up to 10 schedules and 100 events can be defined (VIP-893-S)
- Simple configuration via web browser interface
- Adjustable display tilt



- Power over Ethernet Plus (PoE+), or external 12 Vdc power adapter
- Telephone handset pre-installed

Access Methods

- Touchscreen activation of announcements
- Remote access activation via Web browser
- SIP protocol phone calls
- Valcom intercom and page group calls

Dimensions/Weight

Product:

- 12.0" W x 8.0" H x 7.5" D
(30.5cm W x 20.3cm H x 19.1cm D)
- 3.8 lbs. (1.7 kg)

Nominal Power Requirements

Power over Ethernet Plus (PoE+):

IEEE 802.3at compliant switch or injector

External via rear panel barrel connector:

Voltage: 12 Vdc

Current: 2A

Power Supply included

Environment

Temperature: 0 to +40° C

Humidity: 0 to 85% non-precipitating

These products are intended for use with a UL Listed power source marked "Class 2" or "LPS" rated 12 Vdc, or 48 Vdc (PoE).

PoE and all interconnected ITE are intended for intra-building.

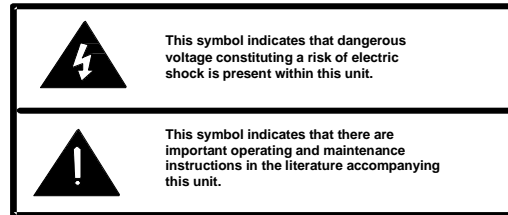
Precautionary Designations

- **WARNING: To Reduce The Risk Of Fire Or Electric Shock. Do Not Expose This Apparatus To Rain Or Moisture.**
- **AVERTISSEMENT: Afin de réduire les risques d'incendie ou de décharge électrique, évitez d'exposer le système à la pluie ou à l'humidité.**
- **Apparatus shall not be exposed to dripping or splashing and no objects filled with liquids, such as vases, shall be placed on the apparatus.**
- **L'appareil ne doit pas être exposé à des égouttements et éclaboussures et aucun Objet Rempli de liquide, comme vase, ne doit être placé sur l'appareil.**

IMPORTANT SAFETY INFORMATION

CONSIGNES DE SÉCURITÉ IMPORTANTES

1. Read these instructions.
Lisez ces instructions.
2. Keep these instructions.
Conservez ces instructions.
3. Heed all warnings.
Respectez tous les avertissements.
4. Follow all instructions.
Suivez toutes les instructions.
5. Do not use this apparatus near water.
Ne pas utiliser cet appareil près de l'eau.
6. Clean only with dry cloth.
Nettoyer avec un chiffon sec.
7. Do not block any ventilation openings. Install in accordance with the manufacturer's instructions.
Ne pas bloquer les ouvertures de ventilation. Installer conformément aux instructions du fabricant.
8. Do not install near any heat sources such as radiators, heat registers, stoves or other apparatus (including amplifiers) that produce heat.
Ne pas installer à proximité de sources de chaleur telles que radiateurs, registres de chaleur, poêles ou autres appareils (y compris les amplificateurs) produisant de la chaleur.
9. Do not defeat the safety purpose of the polarized or grounding-type plug. A polarized plug has two blades with one wider than the other. A grounding type plug has two blades and a third grounding prong. The wide blade and the third prong are provided for your safety. If the provided plug does not fit into your outlet consult an electrician for replacement of the obsolete outlet.
Ne pas contourner le dispositif de sécurité de la fiche polarisée ou de mise à la terre. Une fiche polarisée possède deux lames dont une plus large que l'autre. Une fiche de terre a deux lames et une troisième broche de mise à la terre. La lame large et la troisième broche sont fournies pour votre sécurité. Si la fiche fournie ne rentre pas dans votre prise, veuillez consulter un électricien pour le remplacement de la prise obsolète.
10. Protect the power cord from being walked on or pinched particularly at plugs, convenience receptacles and the point where they exit from the apparatus.
11. Only use attachments/accessories specified by the manufacturer. plug is damaged, liquid has been spilled, objects have fallen into the apparatus or the apparatus has been exposed to rain or moisture and does not operate normally or has been dropped.
Confiez toute réparation à un personnel qualifié. Une réparation est nécessaire lorsque l'appareil a été endommagé de quelque façon. Par exemple lorsque le cordon d'alimentation ou la fiche est endommagé, du liquide a été renversé, si des objets sont tombés dans l'appareil ou le appareil a été exposé à la pluie ou à l'humidité et ne
12. Use only with the cart, stand, tripod, bracket or table specified by the manufacturer or sold with the apparatus. When a cart is used, use caution when moving the cart/apparatus combination to avoid injury from tip-over.
N'utilisez que des fixations / accessoires spécifiés par le fabricant.
Utilisez uniquement avec le chariot, stand, trépied, support ou table spécifié par le fabricant ou vendu avec l'appareil. Quand un chariot est utilisé, Soyez prudent lorsque vous déplacez l'ensemble chariot / appareil pour éviter des blessures dues au renversement.
13. Unplug this apparatus during lightning storms or when unused for a long period of time.
Débranchez cet appareil pendant les orages ou lorsqu'il n'est pas utilisé pendant une longue période de temps.
14. Refer all servicing to qualified service personnel. Servicing is required when the apparatus has been damaged in any way. Such as when the power supply cord or fonctionne pas normalement ou s'il est tombé.



FCC Information

This equipment has been tested and found to comply with the limits for a Class A digital device, pursuant to Part 15 of the FCC Rules. These limits are designed to provide reasonable protection against harmful interference when the equipment is operated in a commercial environment. This equipment generates, uses and can radiate radio frequency energy and if not installed and used in accordance with the instruction manual, may cause harmful interference to radio communications. Operation of this equipment in a residential area may cause harmful interference in which case the user will be required to correct the interference at his own expense.

INSTALLATION

Mounting

The VIP-893 is designed for table mounting with 4 non-skid pads to protect the table surface and to provide slip resistance. Three attachment loops are provided on the top side of the base, which can be used for securing wiring with zip ties, etc. A suggested use is to secure the VIP-893 to the table to prevent unintentional movement or deter theft.

Power

The VIP-893 IP Interactive Console requires Power over Ethernet Plus (PoE+) compliant with IEEE 802.3at, or 12 Vdc external power. An external power adapter is included with the VIP-893. If using PoE+, power will be supplied through the network connection. If using the included external power adapter, the connection is made on the bottom of the panel, from the rear.

First loosen the small screw securing the retaining tab below the power input socket and swing the retaining tab out of the way. Insert the power adapter barrel connector into the socket, reposition the retaining tab to hold the connector in place and retighten the screw.

A power on/off slide switch is located on the bottom of the panel, adjacent to the power input connection. See Figure 1.

Network Connection

The VIP-893 has one RJ-45 network connector on the bottom of the panel. A 10-foot Ethernet cable is pre-connected at the factory, for connecting directly to an Ethernet switch. Additionally, a RJ-45 Ethernet coupler is included to facilitate extension with an additional cable, or the factory cable can be removed and replaced.

Setup

Initial setup of the VIP-893 will be performed using the Valcom IP Solutions Setup Tool. Download the latest version of the free IP Solutions Setup Tool from the Valcom web site at www.valcom.com/vipsetuptools.

Additional programming will be done directly in the VIP-893 through the touch screen interface, and via web browser interface. For further

information, please refer to documentation available on the Valcom web site.

TECHNICAL ASSISTANCE

When trouble is reported, verify power is being supplied to the unit and there are no broken connections. If a spare unit is available, substitute a spare unit for the suspected defective unit.

Assistance in troubleshooting is available from the factory. Call (540) 563-2000 and press 1 for Valcom Technical Support, or visit our website at www.valcom.com.

Valcom equipment is not field repairable. Valcom, Inc. maintains service facilities in Roanoke, VA. Should repairs be necessary, attach a tag to the unit clearly stating your company name, address, phone number, contact person and the nature of the problem. Send the unit to:

Valcom, Inc.
Repair & Return Dept.
5614 Hollins Road
Roanoke, Va. 24019-5056

WARRANTY

Warranty information may be found on our website at www.valcom.com/warranty.

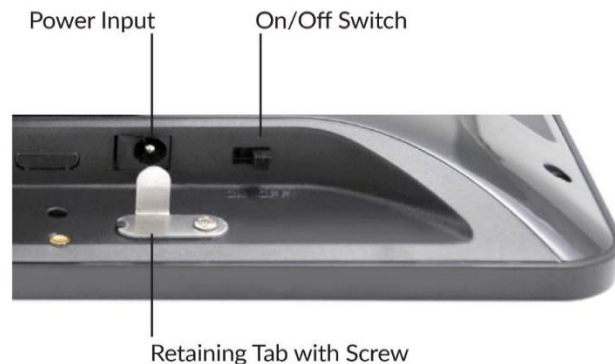


Figure 1.