

X303 -2 Wire Quick Installation Guide

English

Precautions

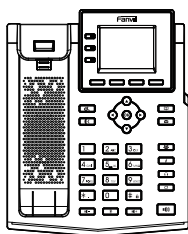
Warning: Please do not power cycle the device during system boot up or firmware upgrade. You may corrupt firmware images and cause the unit to malfunction.

Warning: Use only the power adapter included in the device package. Using an alternative non-qualified power adapter may possibly damage the unit.

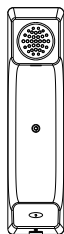
Overview

X303-2 Wire phone is an upgrade from the existing IP phones in terms of power and network supply, adopting a 2-Wire connection. It features high-definition voice, rapid deployment, a 2.4-inch color main screen, four SIP accounts, and supports 2-Wire power and network supply, multi-party conference calls, among other rich functions. It also offers expansion capabilities such as connectivity to EHS wireless headsets. This 2-Wire IP phone can meet various application scenarios and provide a high-quality user experience.

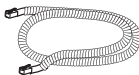
Packaging list



X303-2 Wire



Handset



Handset Cord



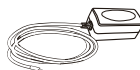
2-Wire Cord



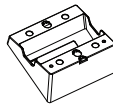
Quick Installation Guide



Stand

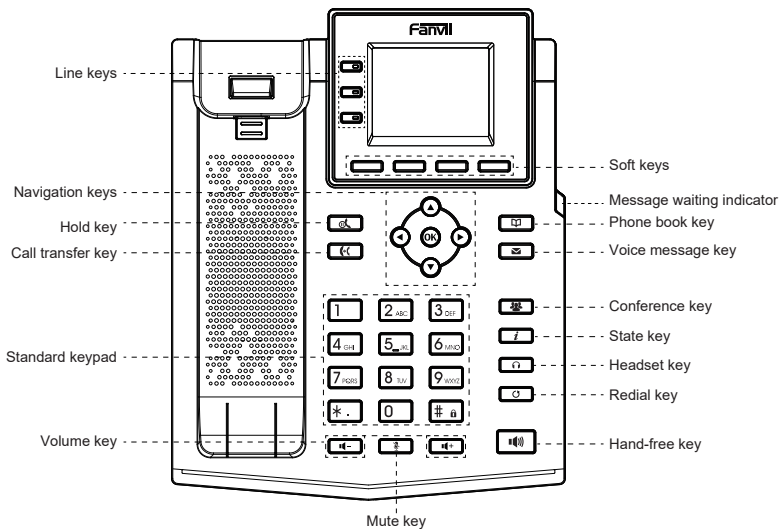


Power Adapter
(Optional)



Wall Stand
(Buy separately)

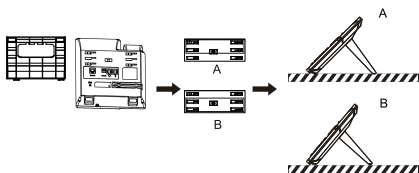
Keys description



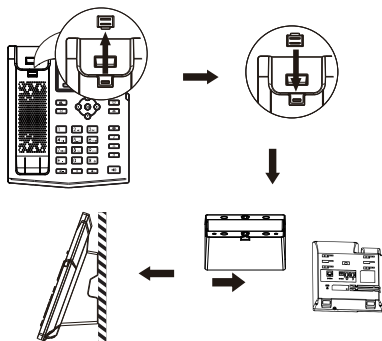
Device Installation

Please follow the instructions in below picture to install the device.

• Bracket desktop installation



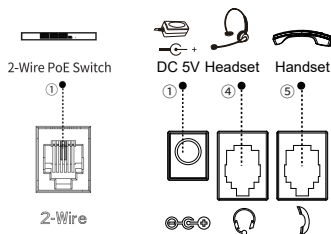
• Wall mounting (wall stand need buy separately)



• Connecting to the device

Please connect power adapter, network, PC, handset, and headset to the corresponding ports as described in below picture.

- 1 Power port: connect the power adapter.
- 2 Network port: connecting local area network or Internet.
- 3 PC port: the network port connect to the computer.
- 4 Headset port: connect headset.
- 5 Handset port: connect IP Phone handset.



Note: You can contact your service provider for additional settings that may be necessary to con-figure the phone, or download the user manual and FAQ for more detailed information.

Network connect

Powered and networked through 2-wire

1. Turn on the power of the 2-Wire POE switch, and connect the phone's 2-Wire interface to the 2-Wire POE switch using a 2-wire cord.
2. The default is DHCP mode.

Phone configuration

Configuration via LCD menu of phone

1. Press Menu > System (default password 123)
2. Select Network: To configure the Network Settings (IPv4/IPv6/IPv4&IPv6) ;
3. Select Accounts: To configure enable the account, fill the SIP server address, port, user name, password etc ;
4. Save the configuration.

Configuration via web

1. Get the IP address from the phone: Press the key>Network, to get IP ;
2. Login: Input the IP address in the web browser. The PC and phone should be in the same IP address segment (The default username and password are both 'admin') ;
3. Configure: Select network/account etc, and fill the relevant content ;
4. Save the configuration.

Language setting

1. Press Menu key > Basic > Language.
2. Select the desired language and press OK soft key.

Making a call

1. **Pre-dialing:** enter the phone number and pick up the handset.
2. **Direct dialing:** lift the handset and enter the phone number.
3. **Handsfree:** enter phone number and press or vice versa.
4. **Headset:** enter phone number and press or vice versa.
5. **Designated line:** press line key, enter phone number and press dial key.

Accepting a call

1. **Using the handset:** pick up the handset.
2. **Using the headset:** press .
3. **Using the handsfree:** press .

Redial

1. Press key, redial a call number.



Fanvil Technology Co., Ltd

Website: www.fanvil.com

E-Mail: sales@fanvil.com support@fanvil.com

Tel: +86-755-2640-2199 Fax: +86-755-2640-2618

Add: 10/F Block A, Dualshine Global Science Innovation Center, Honglang North 2nd Road, Bao'an District, Shenzhen, China