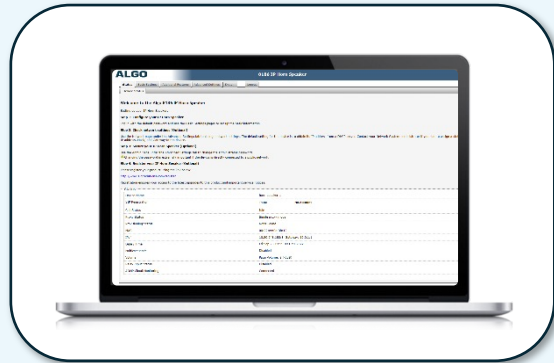


Algo Device Management Solutions

EACH IP ENDPOINT Device Web Interface



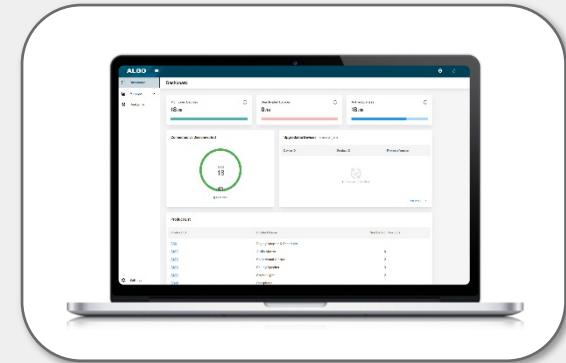
- Each device's web interface is accessible via the device IP address
- All configuration settings can be adjusted in the device, no additional software is required

DEDICATED DEVICE MANAGER 8300 – On Premise Solution

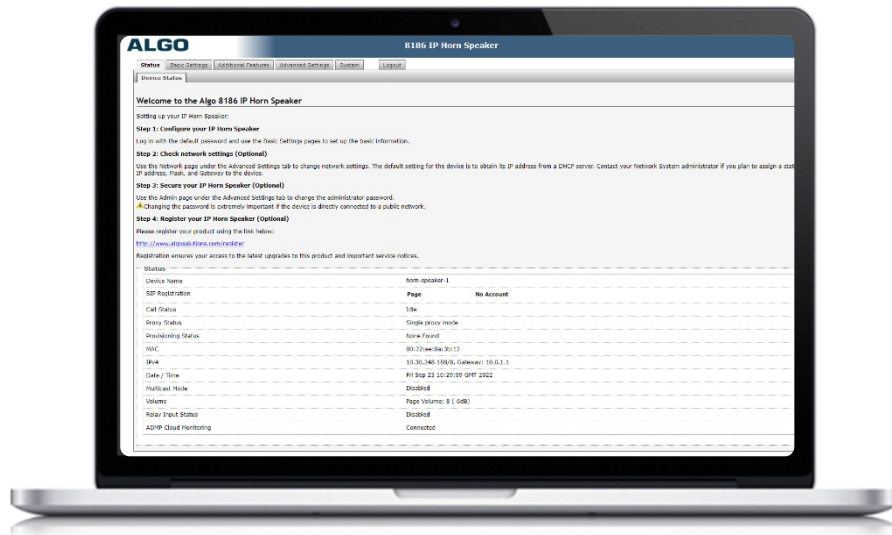


- Centralized device management solution, shows status of all devices in one view
- Deployed onto local network and can access all devices on that specific network

DEDICATED DEVICE MANAGER ADMP – Cloud-Based Solution



- Centralized device management solution, shows status of all devices in one view
- Cloud-based, can view and manage devices across multiple networks, from anywhere



- All Algo IP Endpoints have an intuitive web interface, accessible via the device IP Address
- Common layout across all products
 - General Status
 - Basic & Advanced Features
 - Security and Network settings
- All configuration settings accessible from web interface
- Ability to download/upload pre-saved configuration files to deploy common configuration across multiple devices

8300 Controller – On Premise Device Management

ALGO



Algo 8300 Controller

Status

Status and Login Dashboard

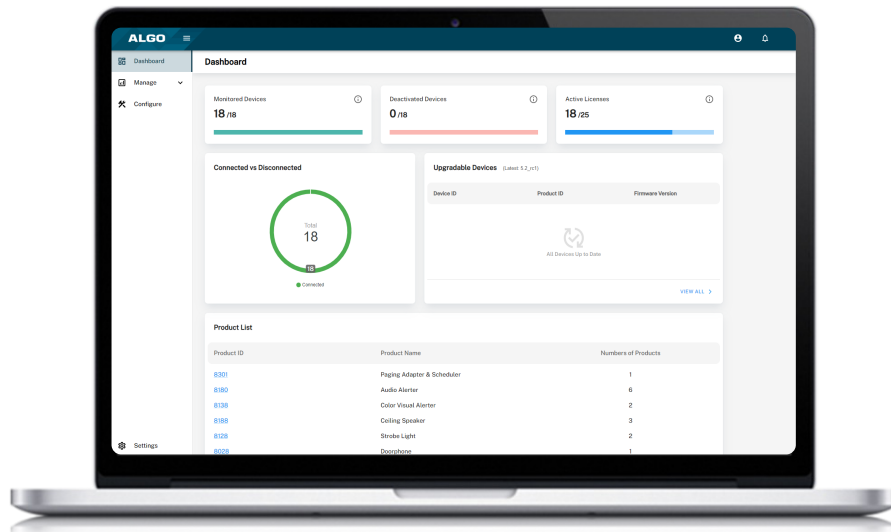
One or more devices have been disconnected.

The Dashboard's "Managed Devices" list tracks the online/offline status of preconfigured devices. To configure the Managed Devices list, log in and go to "Dashboard > Devices" tab.
*Note: SNMP must be enabled to monitor devices correctly. Enable SNMP in "Advanced Settings > Admin" tab of the target device.

Search devices...
 All Online Offline

IP	MAC	Product	FW	Name	Status
192.168.2.191	00:22:ee:12:00:8f	8180G2		sipalerter	Error Unreachable
192.168.2.211	00:22:ee:03:41:1f	8028		doorphone	Warning SNMP Disabled
192.168.2.203	00:22:ee:1e:00:12	8190S		sipspkrclk	Warning SNMP Disabled
192.168.2.206	00:22:ee:07:2f:d0	8188	1.7.6	sipcelling	Online
192.168.2.207	00:22:ee:0b:01:15	8039	2.0.1	videodoorphone	Online
192.168.2.205	00:22:ee:0f:00:df	8138	4.4	sipstrobe	Online
192.168.2.189	00:22:ee:09:29:48	8301	1.7.6	master-1	Online

- Monitoring Algo devices for in service
- Notification via email, SIP call or audible alarm for “offline” conditions
- Single pane view of all Algo devices connected to subnet
- One-time hardware purchase, no ongoing costs



- Cloud-based device management solution to manage, monitor, and configure Algo IP endpoints from any location.
- **Monitor.** Provides device status, including notification should devices go offline (with email notification)
- **Manage.** Basic management functionality such as:
 - Pushing configuration settings
 - Upgrading device firmware
 - Troubleshooting devices
- **Organize.** Easily organize and view devices with intuitive tagging, filtering and search functionality.