



P-Series Phones

Feature-rich Desk Phones for Sangoma's Suite of Communication Solutions



Designed for Sangoma's portfolio of UCaaS and UC solutions and toolkits including Business Voice*, Switchvox, PBXact, FreePBX, and Asterisk

**Coming Soon*

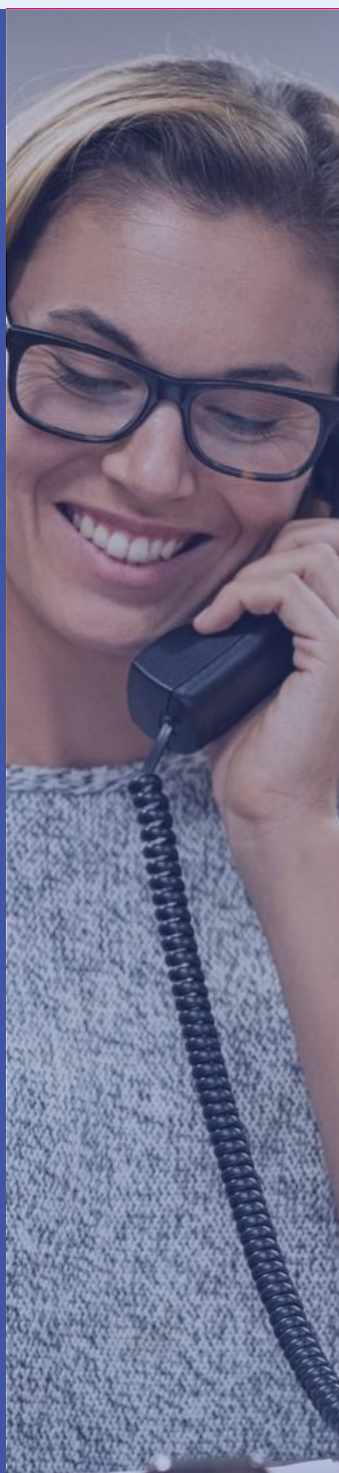
Fully Featured IP Phones

Sangoma's line of P-Series phones are designed to deliver the features you need for every user type at a competitive price point. All models include high definition audio, unprecedented plug-and-play deployment, and advanced built-in applications that include voicemail, call log, contacts, phone status, user presence, parking and more*.



All Models Include

- » Full-color display screens
- » High definition audio
- » Customizable Busy Lamp Field (BLF) Keys
- » Power Over Ethernet (POE)
- » Electronic Hookswitch capable headsets (i.e. Sangoma H10 and H20)
- » Lock ports to ensure physical security
- » Real-time status
- » Contacts
- » Transfer & conference calls
- » Zero Touch Provisioning for all of Sangoma's UCaaS platforms



Sangoma's P-Series phones are the only phones that are compatible across Sangoma's communications as a service portfolio line, further enhancing their value.

Offering the tightest integration possible, they incorporate plug-and-play installation with auto-provisioning; saving you time.

Designed For

Business Voice
Coming Soon

PBXACT

Switchvox

freePBX

Asterisk

Meet The **P-Series** Line of Desk Phones

The P-Series line serves 3 business verticals



Entry Level

» P310 & P315

Mid-Range

» P320, P325 & P330



Executive Level

» P370



Some
Benefits
of The
P-Series
Line

- » Users have one Sangoma phone for any Sangoma PBX/UC platform
 - Mix platforms between offices, but keep the same look and feel
- » Sangoma phones all work the same way without any differences between lines
 - Makes upgrades simple; no additional training required
- » Partners stock and support only one Sangoma phone product line
- » Lower-cost of entry for price-sensitive opportunities

Entry Level

P310 & P315



The perfect fit for offices, education (schools, colleges), manufacturing floors, and retail stores. Wherever you need reliable, basic calling functionality.

Both Models Include

- » A 2.4 " 320x240 Backlit Color Display, crystal clear speakerphone, and headset support with two VoIP lines with illumination
- » BLF Key (with Red, Amber, Green for line status)
- » Ability to load custom idle screen images for company logos
- » The P310 and P315 are identical aside from their network capabilities. The P310 operates at 100Mbps speeds and the P315 operates at 1000Mbps (Gigabit) speeds.

Mid-Range

P320, P325 & P330



The mid-range line includes a large, all-around visible 4.3 inch 480x272 color IPS display for use with built-in business applications.

Key Highlights Include

- » The P320 starts the mid-range with 4-line keys programmable for VoIP accounts or as BLF with speed dial to direct-dial or monitor an extension.
- » The P325 delivers 6-line keys, a paging key for 20 pages of virtual keys
- » The P330 adds to the P325 with 12 line keys, Bluetooth, and 2.4/5GHz WiFi for a wire-free network setup. It also supports the PM200 expansion sidecar, a 20-key attendant console for operators.

Executive Level

Beautifully Designed P370



For the executives in the office that demand a sleek desktop presence, the P370 delivers with a large 7.0" 1280x800 color IPS touchscreen display

Key Highlights Include

- » 16 lines (software)
- » Bluetooth and WiFi Support
- » Built-in business applications
- » Support for our PM200 attendant console

For complete technical details on each model
refer to the matrix on page 8

P-Series Model Comparison



**Value Models
P310 & P315**



**Mid-Range Models
P320, P325, P330**



**Executive Model
P370**



**Expansion Module
PM200**

Display

2.4" 320x240,
Color, TN

4.3", 480x272,
Color, IPS

7.0" 1280x800,
Color, IPS, Touch

4.3" 480x272,
Color, IPS

Touchscreen

No

No

Yes

No

Line Keys

2

P320: 4
P325: 6 with
Paging
Key
P330: 12 with
Paging
Key

16 (soft-keys)

2 rows of 10 keys
w/ Paging keys

Ethernet

P310: Fast
P315: Gigabit

Gigabit

Gigabit

N/A

Built-in
Bluetooth

No

P320: No
P325: No
P330: Yes

Yes

N/A

Built-in Wi-Fi
2.4/5G/802.11n

No

P320: No
P325: No
P330: Yes

Yes

N/A

USB Ports

0

P320: 1
P325: 1
P330: 2

2

2 (1U,1D)

Expansion
Module
Support

No

P320: No
P325: No
P330: Yes

Yes

Yes

Highly Integrated Productivity Applications

All P-Series desk phones are designed with built-in enhanced applications that take communication to the next level*



Context-sensitive Phone Books

Show device state, presence, monitor, intercom and more.



Call Queues

Login, Logout, Pause, Resume. See queue overview statistics and queue member details.



Call Recording

Record calls and forward if needed. Call recording is system initiated so everything is centrally saved.



PIN-based Hot-desking

Log-in or Log-out of any desk phone by simply using voicemail PIN.



Visual Voicemail & Screening

See who called, with call-back, playback, read/unread toggling and forwarding.



Conference Call Management

See who's talking, mute and unmute, user and all-kick functions.



Call Parking including retrieval

Park a call, view or retrieve. Call Parking is system initiated so everything is done centrally.



Call Logs

Calls made by users on any device, not just the desk phone.

* P310/P315 phones have limited applications. Some applications are not available in launch firmware and will require downloadable firmware updates.

P-Series Technical Specs

Phone Specifications

P370 Executive-Level phone

User Interface

- » 7.0 inch, 800 x 1280 pixel backlit color IPS LCD display
- » Multi-point capacitive touch
- » 16 line appearances (software)
- » Feature and context-sensitive functions
- » Dedicated touch control with backlight for Headset, Speaker, Mute, and without backlight for Volume functions
- » 3-color LED message waiting indicator (MWI)

Connections

- » 4P4C (RJ-9) handset/headset jack
- » 2 switched 10/100/1000 Mbps Ethernet ports
- » 2 USB-A 2.0 ports
- » 12 volt 1.6A DC power port
- » 2 Lock Ports
- » Electronic Hookswitch signaling port

Dimensions/Weight

- » 11" x 9.0" x 3.5", 2.7 lbs.

Software Minimum Version Requirements

- » Switchvox >=7.9
- » FreePBX & PBXact >=15 with Endpoint Manager (latest)

P330, P325, and P325 Mid-Range phones

User Interface

- » 4.3 inch, 480 x 272 pixel backlit color IPS LCD display
- » Line appearance keys:
 - P330 - 12 keys
 - P325 - 6 keys
 - P320 - 4 keys
- » Rapid dial page scroll key for virtual line keys:
 - P330/P325 - yes
 - P320 - no
- » 6 feature keys
- » 4 context-sensitive soft keys
- » 6-key navigation controller
- » Backlit headset, speaker, and mute keys
- » 3-color LED message waiting indicator
- » Volume control

Connections

- » 4P4C (RJ-9) handset/headset jack
- » 2 switched 10/100/1000 Mbps Ethernet ports
- » USB-A 2.0 ports:
 - P320/P325 - 1
 - P330 - 2
- » 12 volt 1.6A DC power port
- » 2 Lock Ports
- » Electronic Hookswitch signaling port

Dimensions/Weight

- » 12.3" x 9.0" x 3.5", 3.0 lbs.

Software Minimum Version Requirements

- » Switchvox >=7.9
- » FreePBX & PBXact >=15 with Endpoint Manager (latest)

P310/P315 Value phones

User Interface

- » 2.4 inch 320x240 pixel backlight color LCD display
- » 2 line appearance keys
- » 4 feature keys
- » 4 context-sensitive soft keys
- » 6-key navigation controller
- » Headset, speaker, and mute keys
- » 3-color LED message waiting indicator
- » Volume control

Connections

- » 4P4C (RJ-9) handset/headset jack
- » 2 switched 10/100 Mbps Ethernet ports (P310)
- » 2 switched 10/100/1000 Mbps Ethernet ports (P315)
- » 12 volt 1.6A DC power port
- » 2 Lock ports
- » Electronic Hookswitch signaling port

Dimensions/Weight

- » 11.93" x 8.2" x 3.5", 2.4 lbs

Software Minimum Version Requirements

- » Switchvox >= 7.7
- » FreePBX & PBXact >= 14 with Endpoint Manager (latest)

Series Specifications

Phone Applications***

- » Visual Voicemail *
- » Contacts
- » Presence/Status
- » Call Log
- » Parked Calls
- » Call Queues **
- » Info
- » Forward Calls
- » Conference App **
- » Hot Desking ***

Phone Features

- » Auto-Answer
- » Headset-answer
- » Headset-ring
- » Distinctive ring
- » Custom ringtones
- » Call waiting
- » Call transfer (unattended & attended)
- » Call forward
- » Call hold
- » Call parking
- » Call pickup
- » Intercom/Paging
- » Message Waiting Indication
- » Busy Lamp Field (BLF)
- » 3-way conferencing
- » Do Not Disturb (DND)
- » Redial
- » Call timer
- » Caller ID display

Audio Features

- » Handset, handsfree, and headset modes
- » Full-duplex HD speakerphone with echo cancellation
- » Hearing aid compatible
- » Multicast audio playback
- » Wideband: G.722
- » Narrowband: G.711 ulaw/alaw, G.726, G.729a

Network Support

- » Static or DHCP IP address assignment
- » NTP time synchronization
- » Priority queuing
- » VLAN, LLDP, NAT traversal, QoS
- » 802.1X pass-through
- » 802.1X authentication

Language Support

- » Dutch, English, French, German, Italian, Portuguese, Russian, Spanish

SIP / VoIP Support

- » SIP v2
- » TLS/SRTP
- » DTMF, RFC4733
- » SIP peer-to-peer
- » SIP presence (SUBSCRIBE/NOTIFY)
- » Per-account digit map/dial plan
- » Dial using SIP URI
- » Dial using SIP server
- » Secure SIP authentication

Provisioning

- » Business Voice & Business Voice + Coming Late 2022
- » Switchvox Cloud & Prem
- » Sangoma Endpoint Manager for PBXact and FreePBX
- » DPMA (Deskphone Module for Asterisk)
- » DHCP Option 66
- » XML Configuration

Management

- » Firmware update via browser
- » Factory restore via UI
- » Remote logging via syslog

Regulatory Compliance

- » CE Mark
- » FCC Part 15, Class B

Maximum Power Consumption

- » P310: 2.5W
- » P315: 2.5W
- » P320/P325 4.5W, 9.5W with USB
- » P330: 8.2W, 5W per USB, 18.2W total
- » P370: 8.5W, 5W per USB, 18.5W total

Operating Conditions

- » Temperature: +32 to 122F / 0 to 50C
- » Relative Humidity: 5% to 95% non-condensing

Storage Temperature

- » -4 to 160F / -20 to 70C

Warranty

- » One year

* Visual Voicemail not supported on P310/P315 models

** Call Queues and Conferencing not supported on all models

*** Some features require proper server-side configuration/support

Add-ons and Accessories

Attendant Console & Wireless Headsets

The PM200 attendant console (coming soon)

For users that need to track and dispatch high volumes of calls, the PM200 attendant console makes life easy. With 20 programmable keys and two pages of targets per console that complement the main phone display, productivity is greatly improved.

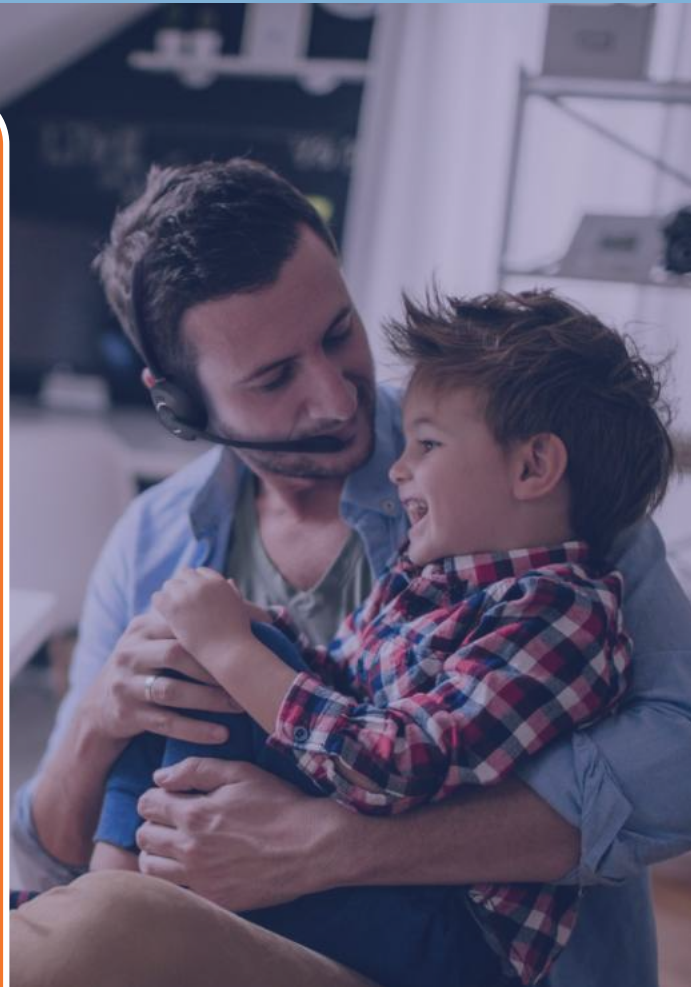
Key Highlights Include

- » 4.3" 480x272, Color, IPS display
- » 2 columns of 10 keys with Paging keys
- » Compatible with: P330 and P370
- » Add up to 6 PM200 sidecar modules for a total of 240 extra keys to the main P-Series phone



Sangoma's H10 and H20 DECT headsets extend the range of your P-Series desk phones with wireless freedom, enabling you to be productive roaming around the office, or at home, never missing a beat.

For the best flexibility, choose our H20 headset with USB connectivity with our softphones, video conferencing and collaboration software to work from wherever you want to be.





www.sangoma.com

North America

+1 877 344 4861

Toll Free

+1 256 428 6000

Central / South America

MX +52 5541708598

Europe / Africa

UK +44 1344 269220

Asia / Middle East

IN +91 226 7866707