

ADTRAN

# Business Wi-Fi

## 802.11ac Enterprise-class Access Points



Low TCO



Zero-Touch



Gigabit



Wi-Fi



Open

## Benefits

- Enterprise-class Access Points available at market-disruptive pricing
- 100% Cloud-Managed Wi-Fi without required subscriptions
- Zero-touch AP provisioning and Zero IT setup in five minutes or less
- Context-aware security and firewall for the highest level of security
- Automatic channel and power adjustments to optimize coverage and maximize performance
- Seamless support and feature upgrades to match your unique needs and budget

## Overview

ADTRAN's wireless portfolio includes a family of concurrent dual band 802.11ac (Wi-Fi 5) Wave 1 and Wave 2 high-performance Access Points (APs).

ADTRAN Access Points are a perfect fit for businesses of all sizes, including educational institutions, retail, hospitality, and healthcare providers who are looking to move their organizations to a pervasive mobility environment.

### Enterprise-class Access Points

Whether you need reliable coverage in medium density wireless environments such as classrooms and retail stores, ultra-high density environments like indoor arenas and conference centers, or coverage in the harshest outdoor environments, ADTRAN APs are designed to meet the demands of the digital workplace.

ADTRAN Access Points deliver optimal performance, and are completely plug-and-play, requiring no manual configuration. With lower-cost indoor and outdoor APs, you can create an experience that best fits the needs and budget of your organization.



# ADTRAN BUSINESS WI-FI

## 802.11ac Access Points



2020

- Indoor AP with 4 internal MIMO antennas
- Low to medium client density
- Concurrent dual band 2.4 GHz and 5 GHz
- 2x2:2 MIMO with 867 Mbps for 5GHz and 300 Mbps for 2.4 GHz



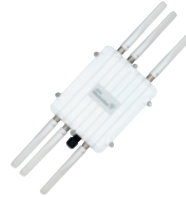
2030

- Indoor AP with 6 internal MIMO antennas
- Medium to high client density
- Concurrent dual band 2.4 GHz and 5 GHz
- 3x3:3 MIMO with 1.3 Gbps for 5GHz and 450 Mbps for 2.4 GHz



2035

- Indoor AP with 6 external RP-SMA antennas
- Medium to high client density
- Concurrent dual band 2.4 GHz and 5 GHz
- 3x3:3 MIMO with 1.3 Gbps for 5GHz and 450 Mbps for 2.4 GHz



2135

- Outdoor AP with 6 N-Type external antennas
- Ultra-high client density, rated for harsh outdoor environments
- Concurrent dual band 2.4 GHz and 5 GHz
- 3x3:3 MIMO with 1.3 Gbps for 5GHz and 450 Mbps for 2.4 GHz



3040

- Indoor AP with 10 internal PIFA omnidirectional antennas
- Ultra-high client density
- Concurrent dual band 2.4 GHz and 5 GHz Wave 2 performance
- 4x4:4 MU-MIMO with 1.733 Gbps for 5GHz and 800 Mbps for 2.4 GHz



3045

- Indoor AP with 8 RP-SMA external antennas, and 2 PIFA omnidirectional internal antennas
- Ultra-high client density
- Concurrent dual band 2.4 GHz and 5 GHz Wave 2 performance
- 4x4:4 MU-MIMO with 1.733 Gbps for 5GHz and 800 Mbps for 2.4 GHz

## Product Specifications

Feature	2020	2030	2035	2135	3040	3045
<b>Interfaces</b>						
One 1 Gbps Auto-Sensing	●	●	●	●		
One 2.5 Gbps Auto-Sensing					●	●
RJ-45 Connector	●	●	●	●	●	●
USB 2.0					●	●
802.3af/802.3at Compliant PoE/PoE+ or 12 volt AC/DC power adapter	802.3af PoE	802.3af PoE	802.3af PoE	802.3at PoE+	802.3at PoE+	802.3at PoE+
<b>Mobility Services</b>						
SoftGRE Tunneling		●	●		●	●
802.1Q VLAN Support		●	●		●	●
<b>Radios</b>						
Dual/Quad Radio 802.11 a/b/g/n/ac MIMO	Dual	Dual	Dual	Dual	Quad	Quad
Configurable for Sensor-Mode RF Scanning	●	●	●	●		
HT20, HT40 and VHT80	●	●	●	●		
DynamicRF (Radio Resource Management)	●	●	●	●	●	●
DynamicSteering (Band/Client Steering), Load Balancing, and Sticky Client Prevention Technology with 802.11k/v Support		●	●		●	●
Integrated Bluetooth Low Energy (BLE) Radio					●	●
Dual Band Scanning/Security Radio					●	●
HT20, HT40 and VHT80, VHT80+80, VHT160					●	●
Max Aggregate TX Power	2.4 GHz: 22 dBm 5 GHz: 23 dBm	2.4 GHz: 24 dBm/250 mW 5 GHz: 26 dBm/400 mW		2.4 GHz: 29 dBm/800 mW	2.4 GHz: 26 dBm/400 mW 5 GHz: 25 dBm/316 mW	

# 802.11ac Enterprise-class Access Points

Feature	2020	2030	2035	2135	3040	3045
<b>Environment</b>						
Operating	32° F to 104° F (0° C to 40° C)			-40° F to 140° F (-40° C to 55° C)	32° F to 104° F (0° C to 40° C)	
Storage	-4° F to 140° F (-20° C to 60° C)	40° F to 158° F (-40° C to 70° C)		-58° F to 150° F (-40° C to 70° C)	-40° F to 158° F (-40° C to 70° C)	
Humidity	5% to 90% Typical					
Waterproof				IP67 and Salt-spray Resistant		
Built-in Antenna and Ethernet Surge Protection				•		
<b>Mounting</b>						
Wall/Ceiling/T-bar Mount Kit Included	•	•	•		•	•
Wall/Ceiling/Pole Mount Kit Included				•		
<b>Physical</b>						
Dimensions	6.3 in. x 6.3 in. x 1.5 in. (W x D x H)	6.5 in. x 6.5 in. x 1.5 in. (W x D x H)		7.8 in. x 7.8 in. x 1.9 in. (W x D x H)	8.3 in. x 8.3 in. x 1.5 in. (W x D x H)	
Weight	.44 lbs (0.3 kg)	1.25 lbs (0.6 kg)		3.2 lbs (1.45 kg)	1.5 lbs (0.7 kg)	

## Additional Product Specifications

### Certifications

- Wi-Fi 802.11 a/b/g/n/ac Certification

### Mobility Services

- Eight SSIDs per radio
- Support for Apple Bonjour-Based Services (Air-print, Airplay), Apple CNA, and Microsoft NCSI
- Wireless Client Load Balancing
- Secure Fast Roaming with Opportunistic Key Caching Seamless Layer 2 and Layer 3 roaming
- High Availability

### QoS for Voice, Data, and Video

- Smart Bandwidth Management (Incoming, Outgoing)
- 802.1p or Differentiated Service Code Point (DSCP)
- WMM Power Save (U-APSD)

### Security

- 802.1X Port-Based Authentication
- Open System (WEP-64/128)
- Shared System (WEP-64/128)
- WPA/WPA2-Personal
- WPA/WPA2-Enterprise
- EAP-TTLS
- WMM (802.11e)
- EAP-PEAP
- EAP-FAST
- EAP-TLS
- EAP-SIM
- EAP-AKA

### Radios

- Configurable Maximum Associated Clients per Radio
- Multicast/Broadcast to Unicast Conversion
- A-MPDU and A-MSDU Frame Aggregation

### Agency Approvals

#### Electrical/Safety Compliance

- UL 1950
- IEC 60950
- CSA 22.2
- EN 60950

#### Radio Approvals

- FCC Part 15.247
- RSS-210 (Canada)
- EN 300.328 (Europe)
- AS/NZS 4771 (Australia & New Zealand)
- NCC (Taiwan) and IDA (Singapore) excludes AP 2020 and 2135)
- EMI and Susceptibility (Class A)
- FCC Part 15.107 and 15.109
- ICES-003 (Canada)
- EN 301.489-1 and -17 (Europe)
- AS/NZS 3548

### Warranty

- Limited Lifetime Warranty

# Ordering Information

## 1. Choose Your AP (Includes Access to Express Cloud and Interactive Support Community)

Equipment	Part No.
AP 2020 Indoor, 11AC, 2x2:2, Internal Antenna	1700945F1
AP 2030 Indoor, 11AC, 3x3:3, Internal Antenna	1700948F1
AP 2035 Indoor, 11AC, 3x3:3, External Antenna	1700949F1
AP 2135 Outdoor, 11AC, 3x3:3, External Antenna	1700962F1
AP 3040 Indoor, 11AC, 4x4:4, Internal Antenna	1700965F1
AP 3045 Indoor, 11AC, 4x4:4, External Antenna	1700966F1

## 2. Choose Your Accessories

Equipment	Part No.
AP 2020/2030/2035/3040/3045 802.3af Compliant PoE Injector	1700926F1
AP 2020 AC/DC Power Adapter	1700928F1
AP 2030/2035 AC/DC Power Adapter	1700929F1
AP 2035 Omnidirectional Antenna Bundle with 5 dBi gain	1700957F1
AP 2035 Dual Band High Density Antenna Bundle with 13/7 dBi gain (2.4/5 GHz respectively)	1700983F1
AP 2135 802.3af Compliant PoE Injector	1700923F1
AP 2135 Antenna Bundle	1700930F1
AP 3040 AC/DC Power Adapter	1700963F1

## 3. Add Enhanced Support/Extended Warranty

Warranty Option	Part No.
Phone Support	
ProCare 1-Year Basic Maintenance for 1 Access Point for use with upgrading Express Cloud from Interactive Support Community.	1100AMWIF1M1T1
ProCare 3-Year Basic Maintenance for 1 Access Point for use with upgrading Express Cloud from Interactive Support Community.	1100AMWIF1M1T3
Phone Support and Advanced Hardware Replacement	
ProCare 1-Year NBD Remote Maintenance for 1 Access Point for use with upgrading Express Cloud from Interactive Support Community. Includes support and next business day advanced hardware replacement.	1100AMWIF1M2T1
ProCare 3-Year NBD Remote Maintenance for 1 Access Point for use with upgrading Express Cloud from Interactive Support Community. Includes support and next business day advanced hardware replacement.	1100AMWIF1M2T3

## Or 4. Select EliteCloud

Elite Option	Part No.
EliteCloud 1-Year Subscription for 1 Access Point. Includes: EliteCloud, ProCare support, software/firmware updates, next business day advanced hardware replacement.	1100MSPH200112
EliteCloud 3-Year Subscription for 1 Access Point. Includes: EliteCloud, ProCare support, software/firmware updates, next business day advanced hardware replacement.	1100MSPH200136
EliteCloud 5-Year Subscription for 1 Access Point. Includes: EliteCloud, ProCare support, software/firmware updates, next business day advanced hardware replacement.	1100MSPH200160



**ADTRAN, Inc.**  
901 Explorer Boulevard  
Huntsville, AL 35806  
256 963 8000

**General Information**  
800 9ADTRAN  
adtran.com/contactus

**Canada—Montreal, Quebec**  
+1 877 923 8726  
+1 514 940 2888  
sales.canada@adtran.com

**Mexico and Central America**  
+1 52 55 5280 0265 Mexico  
sales.cala@adtran.com

**AD110901A**

April Copyright © 2020 ADTRAN, Inc. All rights reserved. ADTRAN believes the information in this publication to be accurate as of publication date, and is not responsible for error. Specifications subject to change without notice. ADTRAN and the other trademarks listed at [www.adtran.com/trademarks](http://www.adtran.com/trademarks) are registered trademarks of ADTRAN, Inc. or its affiliates in various countries. All other trademarks mentioned in this document are the property of their respective owners.

ADTRAN warranty duration and entitlements vary by product and geography. For specific warranty information, visit [www.adtran.com/warranty](http://www.adtran.com/warranty)

ADTRAN products may be subject to U.S. export controls and other trade restrictions. Any export, re-export, or transfer of the products contrary to law is prohibited. For more information regarding exportation of ADTRAN items (e.g. commodities, technology, software), please visit [www.adtran.com/exportlicense](http://www.adtran.com/exportlicense).



ISO 9001  
ISO 14001  
TL 9000