

FiberPlex™ Industrial Gigabit Managed 90W PoE Switch

Model FP2005E/BT



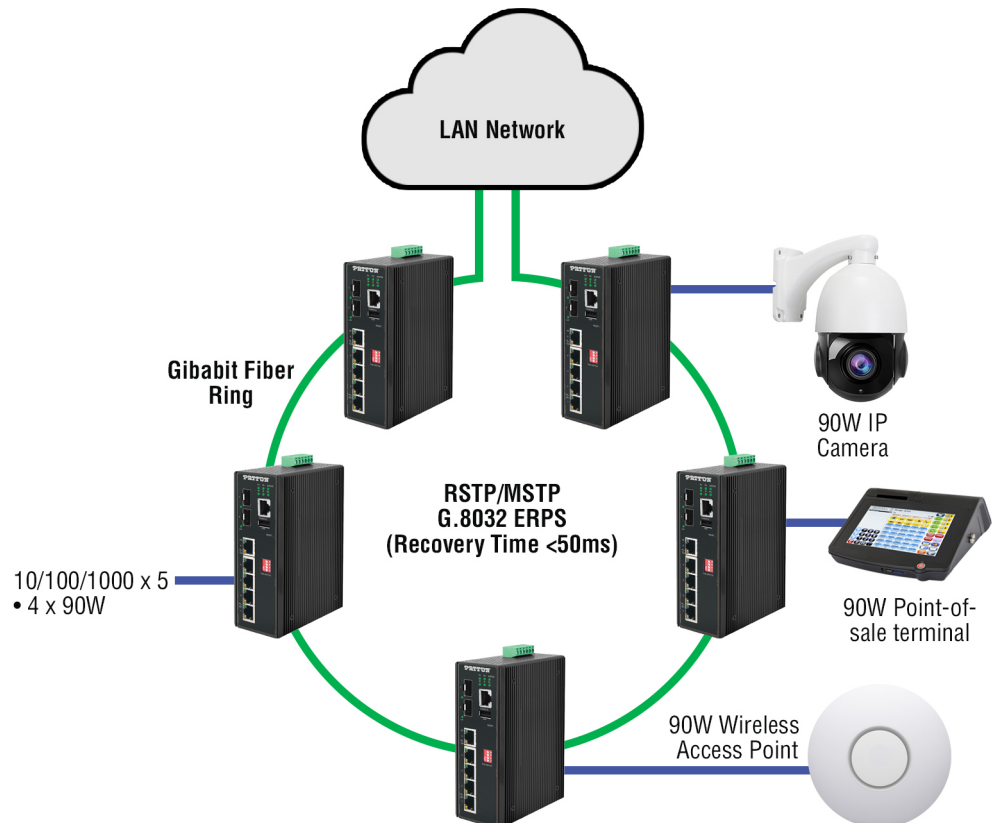
The FP2005E/BT is an industrial-grade, 7-port 90W Power over Ethernet switch ideally suited for industrial Ethernet communications over a moderate bandwidth gigabit fiber trunk. Light Layer 3 management enables this switch to provide reliable redundant connectivity throughout your network.

- Supports 4*10/100/1000Tx IEEE 802.3bt compliant with 90W port, 1*10/100/1000Tx RJ45 port, and 2*100/1000 SFP slots
- Network redundancy support: RSTP/MSTP, and G.8032 ERPS v1/v2 (recovery time <50 ms)
- Configuration: web console, Telnet, CLI command
- Supports IGMP v1/v2/v3, up to 1024 groups
- Supports QoS (IEEE 802.1p) and CoS/ToS
- Supports IEEE 802.1Q VLAN, SNMP v1/v2c
- Power input: 48–55 VDC in 6-pin terminal block
- Reverse polarity protection
- IP30 protection
- DIN-rail or wall mountable
- Operating temperature ranges:
 - STD: 14 to 149°F (-10 to 65°C)
 - EOT: -40 to 167°F (-40 to 75°C)

Patton's FP2005E/BT is a 7-port industrial Gigabit PoE++ managed Ethernet switch embedded with 4*10/100/1000Tx Ethernet ports that support IEEE802.3at/af/bt for a maximum of 90W/port, 1*10/100/1000Tx gigabit Ethernet port, and 2*100/1000 dual rate SFP slots for fiber connection. The FP2005E/BT is a fully manageable Light Layer 3 Ethernet switch that is pre-loaded with a user-friendly web management console design. It supports the ring network redundancy function using the market's open standard ITU-T G.8032 Ethernet Ring Protection Switch (ERPS) protocol that has a <50ms network recovery time. The advanced network filtering and security functions, such as IGMP, VLAN, QoS, SNMP, RMON, Modbus TCP, and 802.1X/HTTPS/SSH/SSL increase determinism and improve network management for remote SCADA systems or control networks.

The FP2005E/BT is IP30 rated and DIN-rail mountable. It also provides high EFT and ESD protection for industrial networking applications, such as power/utility, water wastewater, oil/gas/mining, factory automation, security surveillance, ITS and any other outdoor or harsh environment.

Visit patton.com for more information.



FP2005E/BT Industrial Gigabit Managed 90W PoE Switch

Specifications

Technology

- **L2 Switching:** Port/MAC/Protocol/IP Subnet-based VLAN, GARP/GVRP, Loop Guard, Link Aggregation static/LACP, BPDU guard, Error disable recovery, IGMP snooping v1/v2/v3, MLD snooping v1/v2, IGMP filtering, IPMC throttling / filtering leave proxy, DHCP snooping, G.8032 v1/v2
- **L3 Switching:** DHCP option82, static routes
- **QoS:** 802.1p Queueing, Input priority mapping, Storm control for Unicast/Multicast/Broadcast, Port/Queue/ACL policer, Port egress shaper, Queue egress shaper, DiffServ (DSCP), Tag remarking, Scheduler mode
- **Power Saving:** ActiPHY, PerfectReach, IEEE 802.3az EEE power management
- **Network Redundancy:** STP/RSTP/MSTP, port trunk with LACP, ERPS v1/v2 (<50 ms)
- **Configuration:** Http, Https, Telnet, SSH, CLI, TFTP, SNMP v3
- **System/Diagnostics:** Dual Image Protection, PING, PING6

Switch Properties

- **Switch Architecture:** Back-Plane (Switching Fabric): 24 Gbps
- **Protocols:** IPv4/IPv6, SNMP v1/v2c/v3, LLDP, LLDP-MED, HTTP, HTTPS, SSHv2 telnet, DHCP client, DHCPv6 client, DHCP server, Port Mirror, DNS client/proxy, IP based Access Filter, ICMPv6, syslog, Time Zone /Daylight Saving, NTP client, RMON, sFlow, Loop detection, Console Port, USB configuration backup/restore, Power lost warning, relay trigger
- **Priority Queues:** 8

- **Processing Type:** Store and Forward
- **Flow Control:** IEEE 802.3x for full duplex mode, back pressure for half duplex mode
- **Transfer Rate:** 14,880 pps for Ethernet port; 148,800 pps for Fast Ethernet port; 1,488,000 pps for gigabit Ethernet port
- **Packet Buffer:** 4 Mbits
- **Jumbo Frame:** 9.6 Kbytes
- **MAC Table Size:** 8K
- **VLAN Group:** 4095
- **IGMP Group:** 1024

Port Interface

- **Ethernet Port:** 5*10/100/1000Base-TX (90W/port for ports 1~4 only); Auto negotiation speed; Full/Half duplex mode; and auto MDI/MDI-X connection
- **SFP Port:** 2*100/1000 SFP slots
- **RS232 Serial Console:** 1*RS232 in RJ45
- **LED Indicators:** System: Power 1, Power 2, Master, Ring, Status, PoE Load (P/L), Ethernet ports: Speed/Link/Active, PoE: On-connected to PD devices, SFP: Link/Active

Protection

- **Network Cable:** 10Base-T: 2-pair UTP/STP Cat. 3, 4, 5 cable EIA/TIA-568 100-ohm (100m); 100Base-TX: 2-pair UTP/STP Cat. 5 cable EIA/TIA-568 100-ohm (100m); 1000Base-TX: 4-pair UTP/STP Cat.5/5E cable; EIA/TIA-568 100-ohm (100m)

Mechanical Characteristics

- **Housing:** Metal, IP30 protection
- **Dimensions:** 2.1W x 5.6H x 3.9D in. (54W x 142H x 99D mm)
- **Weight:** Unit: 2.29 lbs (1.04 kg);

Shipping: 3.01 lbs (1.37 kg)

- **Mounting:** DIN-Rail Mounting, Wall Mounting

Power Requirement

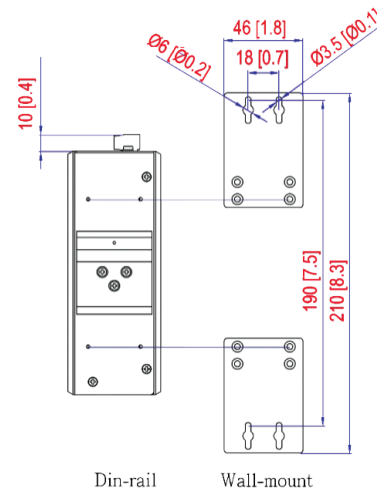
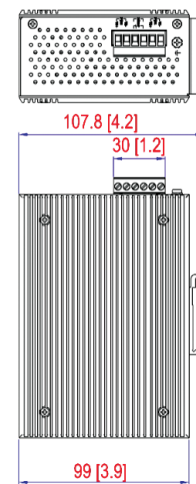
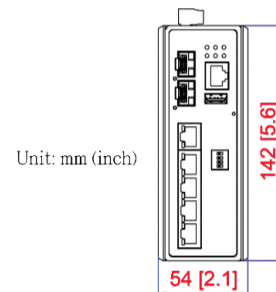
- **Input Voltage:** 48–55 VDC Redundant Input (53–55 VDC power input for BT PoE PSE)
- **Power Connection:** Removable 6-Contact Terminal Block
- **Relay Contact:** 24VDC, 1A resistive
- **PoE Pin Assignment:** V-, V-, V+, V+ for pin 1, 2, 3, 6; V+, V+, V-, V- for pin 4, 5, 7, 8
*Support Modes: Mode A, Mode B, 4-Pair Mode
- **Overload Current Protection:** Present
- **Reverse Polarity Protection:** Present
- **System Power Consumption:** 10.8W
- **PoE Power Budget:** 240W @48–55VDC

Environmental Limits

- **Operating Temperature:** STD: 14 to 149°F (-10 to 65°C), EOT: -40 to 167°F (-40 to 75°C)
- **Storage Temperature:** -40 to 185°F (-40 to 85°C)
- **Ambient Relative Humidity:** 5 to 95%, (non-condensing)

Regulatory Approvals

- **EMI:** FCC Part 15 Subpart B Class A, CE EN55032/EN61000-6-4 Class A
- **EMS:** CE EN55035/EN61000-6-2 Class A, IEC61000-4-2,3,4,5,6,8
- **Free Fall:** IEC60068-2-32
- **Shock:** IEC60068-2-27
- **Vibration:** IEC60068-2-6
- **Green:** RoHS Compliant
- **Certifications:** FCC, CE



Specifications subject to change without notice

PATTON
Let's Connect!™

Patton Electronics Co.
7622 Rickenbacker Drive
Gaithersburg, Maryland 20879, USA
Phone +1 301 975 1000
Fax +1 301 869 9293
E-mail sales@patton.com
Web www.patton.com

Patton-Inalp Networks AG
Meriedweg 7
CH-3172 Niederwangen, Switzerland
Phone +41 (31) 985 25 25
Fax +41 (31) 985 25 26
E-mail we@patton.com
Web www.patton.com

Patton Hungary Zrt
Gábor Dénes utca 4., Infopark Building C
Budapest H-1117, Hungary
Phone +36 1 439 4840
Fax +36 1 439 4844
E-mail ce@patton.com
Web www.patton.com