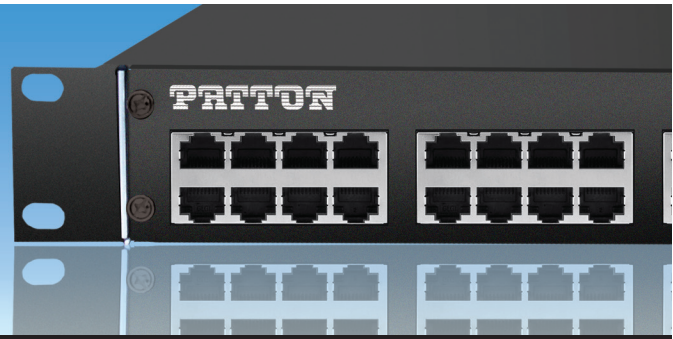


SmartNode™ High Density Gateway

Model SN4740 | 16 to 32-port Analog



The cost-effective gateway solution to tie in 16 to 32 analog phones, fax or PSTN trunk lines to your IP environment.

Up to 32 FXS

*16, 24, 32 Analog ports. Long Reach FXS—
10 km @ 3REN load. MWI, Caller-ID and
AOC support. FXO is coming soon!*

Message Waiting

*Message Waiting Subscription & Notify,
MWI – Line reversal, high voltage and FSK
support.*

Full VoIP protocol support

*SIPv2, SIPv2 over TLS**, SIPv2 over IPv6,
RTP security with SRTP**, T.38, fax and
modem bypass, DTMF relay.*

Easy Management & Provisioning

*Patton Cloud orchestrated, HTTPS zero-
touch provisioning (Mutual Authentication),
SNMP, command line interface and TR-069
for automated mass provisioning for effi-
cient deployments.*

Advanced Call Switching

*Virtual interfaces and routing tables provide
industry leading flexibility in call handling
programming. Local call switching, soft fall-
back to alternative routes. Simultaneously
connects to multiple SIP services/IP PBXs.*

eSBC Upgrade Option

*Simply by purchasing a software license,
the SmartNode becomes a full blown
eSBC. This capability prepares your voice
network for next-generation SIP services
and security.*

The SmartNode™ 4740 VoIP Gateway provides 16 to 32 analog FXS (FXO coming soon) interfaces to connect phones, fax or PSTN trunk lines to your All-IP based Unified Communication system such as SIP Trunks, IP PBX's, Hosted Solution, etc.

Like every SmartNode™, the SN4740 supports every industry-standard CODEC to deliver toll-quality voice on every call. The Unified Communications Agent™ (UCA) provides any-to-any multi-path routing and conversion between TDM/PSTN and SIP Trunks and SIP Endpoints. VoIP-over-VPN with voice encryption provides secure voice and data via IPsec OpenVPN, L2TP in addition to SIP/TLS & SRTP. The advanced call-router functionality include least-cost call routing with flexible dialed-number plan support.

The SmartNode survivability suite provides SIP Trunk and PSTN fallback to ensure business continuity in case the IP network fails. In addition, the SmartNode delivers a smooth transition to All-IP with strong number portability support accepting incoming calls from the PSTN throughout the VoIP service provider's number porting process.

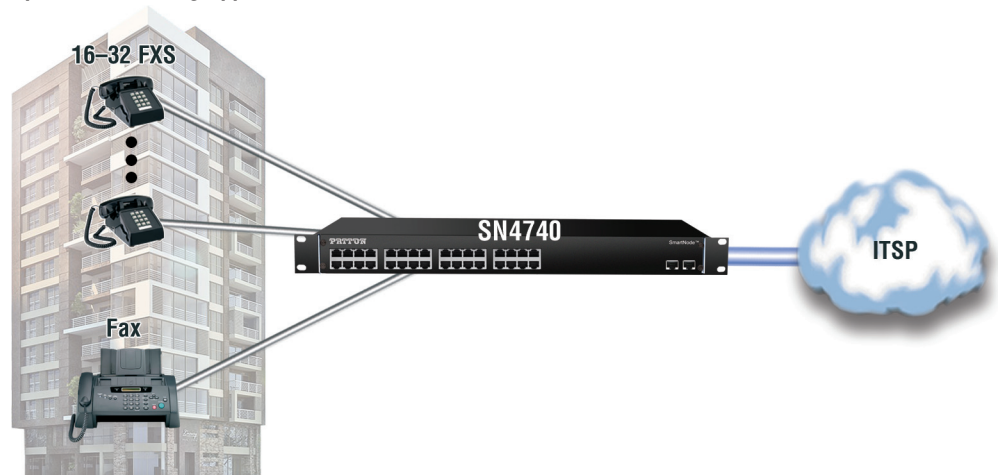
Preserve investments in legacy phone equipment while taking the next steps toward unified communications with the SN4740 VoIP Gateway. Providing 16 to 32 FXS (FXO coming soon) interfaces and two 10/100/1000 Ethernet ports, the SN4740 delivers a reliable, cost-effective solution for the Enterprise.

Visit www.patton.com/smartnode for more information.



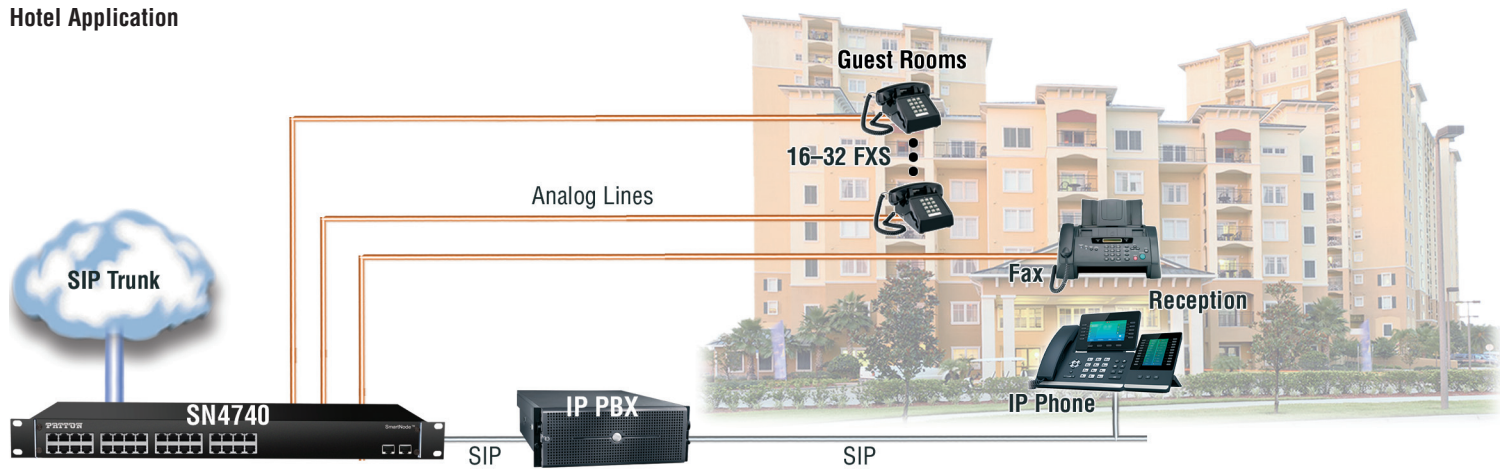
SN4740 Front

Apartment Building Application



SmartNode™ Model 4740 High Density Gateway

Hotel Application



Specifications

Capacity

Up to 32 simultaneous low bandwidth voice or HD calls with SRTP or T.38 fax calls

Voice Signaling

- SIPv2 / SIPv2 over TLS**, SIP over IPv6 (B2BUA—eSBC capable, multi instance, simultaneous support of multiple registrars and direct IP dialing)
- SIP call transfer, redirect
- DTMF in-band & out-of-band
- All tones programmable (dial, ringing, busy)

Voice Processing

- G.722
- G.711m/A-law
- G.723.1 (6.4 kbps)
- G.729, 729a, 729ab (8 kbps)
- G.726 (16, 24, 32, 40 Kbps)
- AMR-NB (4.75, 5.15, 5.9, 6.7, 7.4, 7.95, 10.2, 12.2 kbps)
- G.168-2004 echo cancellation (128 ms)
- Up to 32 simultaneous low-bandwidth voice or T.38 fax calls
- Up to 32 HD calls with SRTP
- Silence suppression and comfort noise

- Adaptive and configurable dejitter buffer
- Configurable RTP packet length

Call Switching & Services

- 3 way and N way conferencing
- Regular expression based call routing and number manipulation
- Number blocking
- Short-dialing
- Digit collection, distribution and hunt groups
- Transparent line extension
- Fallback Routing: Soft fallback to alternative route(s)

FXS Connectivity

- 2-wire Loopstart on RJ-11/12
- MWI – high voltage, line reversal and FSK method
- EuroPOTS (ETSI EG201188)
- Programmable AC impedance, feeding, ring and onhook voltage
- Caller-ID FSK and ITU V.23/Bell 202 generation
- Long Reach FXS—10 km @ 3REN load
- Secondary Surge Protection*

FXO Connectivity (coming soon)

- 2-wire Loopstart—RJ11/12 connector

- Programmable impedance
- Ring detection, tone detection
- Caller ID detection (FXS, DTMF)
- Disconnect supervision

Connectivity

- Two 10/100/1000Base-T Ethernet ports
- USB port
- Auto-MDIX
- DHCP Client and Server
- PPPoE Client (multi-session)
- IP Multi-Netting, VLAN, Secondary IP
- IPv4 and IPv6—Dual Stack
- ICMP
- Dynamic and static NAT and NAPT
- Intelligent ACL
- DNS, DynDNS
- SNMP Client

Quality of Service

- PacketSmart™ Network Assessment & Monitoring**
- Voice priority, DownStreamQoS™
- Traffic Management, shaping policing
- IEEE 802.1p, IEEE 802.1Q, 4096 VLANs (Tag insertion/deletion), TOS, DiffServ Labeling

Management

- Web/HTTPS, CLI and SSH Telnet access

- Patton Cloud Management
- Fully Documented CLI
- Telnet and HTTPs access
- TR-069, TFTP, HTTP, HTTPS configuration & firmware up- & download
- SNMPv3 agent
- Separate config domain (LAN side config and WAN side config)
- MIB II and private MIB
- Built-in diagnostic tools
- Secure Auto-Provisioning with built in root CA

Dimensions

19-in. rack-mount chassis

Environment

- Operating temperature: 32 to 104°F (0 to 40°C)
- Operating humidity: up to 90%, non-condensing)

Safety & Compliance

- EMC compliance: EN55022 and EN55024
- Safety compliance: EN 60950
- CE compliance
- FCC Part 15 Class A
- TBR21 (FXS)
- RoHS
- ITU-T K.21 protection (FXS ports)*

Specifications subject to change without notice | Product images shown may not be an exact representation of the actual product | * Depending on model | ** Licensed Feature at additional charge



Patton Electronics Co.
7622 Rickenbacker Drive
Gaithersburg, Maryland 20879, USA
Phone +1 301 975 1000
Fax +1 301 869 9293
E-mail sales@patton.com
Web www.patton.com

Patton-Inalp Networks AG
Meriedweg 7
CH-3172 Niederwangen, Switzerland
Phone +41 (31) 985 25 25
Fax +41 (31) 985 25 26
E-mail we@patton.com
Web www.patton.com

Patton Hungary Zrt
Gábor Dénes utca 4., Infopark Building C
Budapest H-1117, Hungary
Phone +36 1 439 4840
Fax +36 1 439 4844
E-mail ce@patton.com
Web www.patton.com

50000050, Rev. 1

Patton is a registered trademark, and SmartNode is a trademark of Patton Electronics Company in the United States and other countries.