



OVERVIEW

The PoE Double-Sided IP Display with Universal Mount (IPCDS-RWB-U) works well for corridors, hallways, and any space that requires viewing from both sides. The universal mount provides the option to mount from the wall or ceiling. The angled-display reduces glare and improves readability.

AUDIO



Two 4" high-efficiency speakers
Audio coverage up to 600 ft² on each side

MICROPHONE



Hands-free talk back
Monitoring

FLASHERS



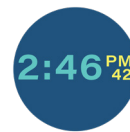
One red, one white, one blue
Individually controlled

LIGHT SENSOR



Auto-dimming display

DISPLAY



Viewable up to 40 ft
1-line or 2-line display
Multi-color scrolling text
and pixel graphics

MOUNTING



Mount from wall or ceiling

ANALOG INTEGRATION



Connect strobes, motion
sensors, electronic locks,
call buttons, etc.

SOFTWARE



Diagnostic software included
Compatible with third-party
software, including InformaCast,
Revolution, and Cisco CallManager

SIP INTEGRATION



SIP-enabled
Easily interfaces with
VoIP/SIP phone systems

SOLUTIONS

- Paging
- Intercom
- Bell scheduling
- Code alerts
- Emergency notification
- Access control
- Security monitoring
- Sound masking
- Music streaming

ADDITIONAL FEATURES

- Built-in web server
- Full multicast and broadcast support
- Requires PoE Cat 5/6 cable
- Atomic time
- Peripheral Interface Adapter Board provides (sold separately):
 - Audio line in
 - Audio line out
 - 2 general purpose inputs
 - 1 general purpose output relay

COMPATIBLE PERIPHERALS

Strobe Kit
AND-STROBE-KIT-1D

Call Button Kit
AND-BTN-KIT-1D

Peripheral Interface Adapter Board
AND-PIA-2D

SOFTWARE

The IPCDS-RWB-U integrates easily with third-party mass notification software, as well as SIP and VoIP phone systems, enabling a facility to take advantage of all the device capabilities. The device also comes with diagnostic software (compatible to run alongside third-party software), and an on-board web server interface, both which provide the ability to monitor and troubleshoot the ANetD devices on the network.

Third-Party Software

- InformaCast (Singlewire)
- Revolution (Syn-Apps)
- IPSession (IPCelerate)
- MessageNet Systems
- BellComander (Acro Vista)

And more!

VoIP Phone Systems

- Cisco CallManager
- Mitel
- Avaya
- 3CX
- Polycom

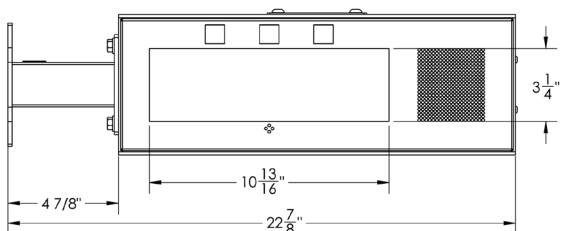
And more!

IPClockWise

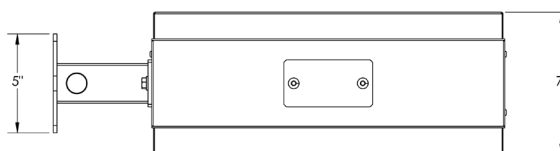
- Diagnostic tool included with device purchase
- Complements investment in third-party software
- Developed and supported by Advanced Network Devices

DIMENSIONS

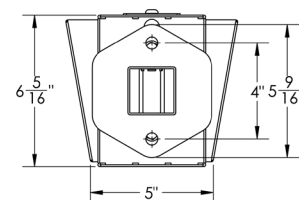
Wall Mount Front



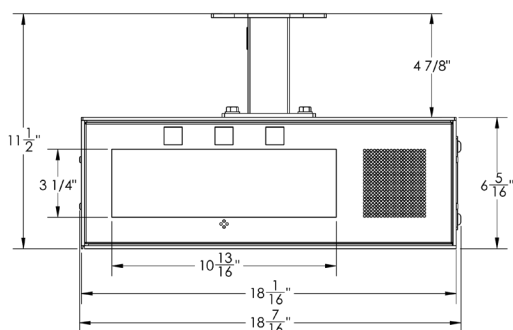
Wall Mount Top



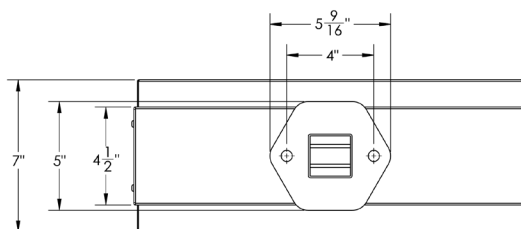
Wall Mount Side



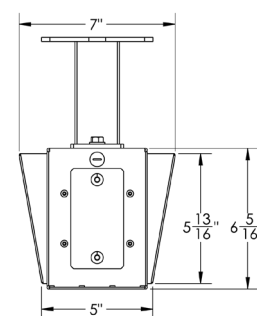
Ceiling Mount Front



Ceiling Mount Top



Ceiling Mount Side



SPECIFICATIONS

IPCDS-RWB-U

ETHERNET I/F	10/100 Mbps
AUDIO POWER	8 W / 16 W
SPEAKER SIZE	4"
AVERAGE SENSITIVITY	94dB, 1W / 1 M
FREQUENCY RESPONSE	150 Hz - 17 kHz
AUDIO PAYLOAD TYPES	G711, A-law and μ -law
POWER INPUT	PoE (IEEE802.3af) 15.4 W or PoE+ (IEEE802.3at) 30.0 W (recommended)
SUPPORTED PROTOCOLS	SIP, IPv4, IPv6, 802.1X, HTTP, SLP, TFTP, NTP, SNMPV1 & SNMPV2c, DHCP, IGMP, ICMP, TCP/IP, LLDP-MED, UDP, MDNS & MDNS-SD
OPERATING TEMPERATURE	-10° TO 50° C (14° TO 122° F)
DIMENSIONS	22.875" W x 6.324" H x 7.038 D (including mount)
WEIGHT	22 lbs (9.98 kg)
WARRANTY	2 Year Limited

Due to continual product development, specifications are subject to change without notice.



Advanced Network Devices | 3820 N. Ventura Dr. Arlington Hts. IL 60004
847-463-2236 | sales@anetd.com | www.anetd.com



Model: IPCDS-RWB-U
Advanced Network Devices
www.anetd.com
Conforms to UL STD 60950-1
Cert. to CAN/CSA STD C22.2 #60950-1
Tested to IEC 62471
42.5V-57.0V DC, 25.5 W Max
802.3at PoE+