

Option 1: Connect to IP phone via EHS

Using the EHS cable 1 - Connect the headset to a VTech VSP8 Series, SNOM D3 Series, or SNOM D785 IP phone

1. Take the **EHS cable 1**. Plug the end labelled **#1 EHS JACK (ON HEADSET BASE)** to the **EHS** jack (red dot) of the headset base.
2. Plug the other end labelled **EHS JACK (ON PHONE BASE)** to the EHS jack **EXT** on your VTech or SNOM phone.
3. Take the **Headset audio cable**. Plug the end labelled **PHONE JACK (ON HEADSET BASE)** to the **PHONE** jack (blue dot) of the headset base.
4. Plug the other end labelled **HEADSET AUDIO JACK (ON PHONE BASE)** to the audio port **EXT** on your VTech or SNOM phone.
5. On your IP Phone, press **EXT** to turn on the headset mode.
 - On the VTech or SNOM IP phone, the **EXT** status icon will appear on the LCD display.
 - On the SNOM D785 series IP Phone. The LED light on the **EXT** key will turn on.

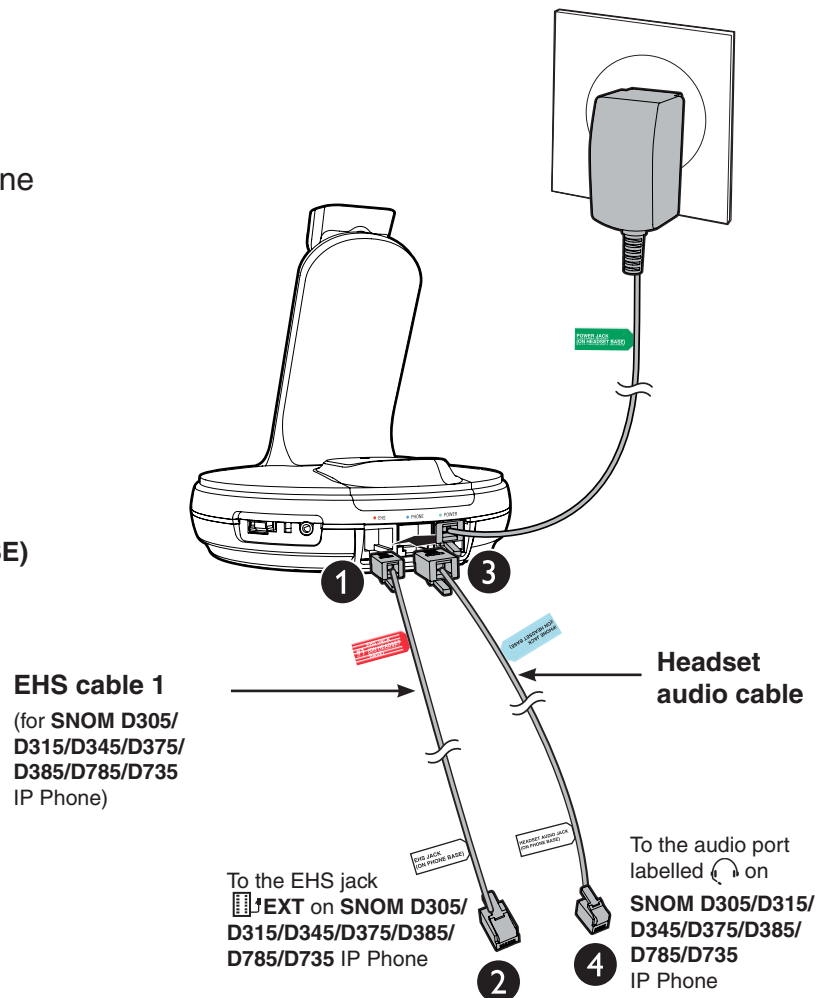
Test the headset after connection:

Press the **ON/OFF** button on the headset to make, answer, or end a call, using the telephone line to which the IP phone is connected.







NOTE:


- Refer to the user's manual of your VTech or SNOM IP phones for the actual locations of the EHS jack and audio port.



Using the EHS cable 2 - Connect the headset to a SNOM D7 (except SNOM D785) Series IP phone


1. Take the **EHS cable 1**. Plug the end labelled **#2 EHS JACK (ON HEADSET BASE)** to the ● **EHS** jack (red dot) of the headset base.
2. Plug the other end labelled **EHS JACK (ON PHONE BASE)** to the EHS jack  on your SNOM phone.
3. Take the **Headset audio cable**. Plug the end labelled **PHONE JACK (ON HEADSET BASE)** to the ● **PHONE** jack (blue dot) of the headset base.
4. Plug the other end labelled **HEADSET AUDIO JACK (ON PHONE BASE)** to the audio port  on your SNOM phone.
5. On your SNOM D7 series IP Phone, press  to turn on the headset mode. The LED light on the  key will turn on.

To test the headset after connection:

Press the  **ON/OFF** button on the headset to make, answer, or end a call, using the telephone line to which the IP phone is connected.



NOTES:

- Make sure you orient the **EHS cable 2** correctly when plugging it into the EHS jack  on the SNOM D710/D712/D715/D725/D745/D765 IP phone. Do not plug it upside down; otherwise, the EHS connection will not be successful.
- Refer to the user's manual of your SNOM IP phones for the actual locations of the EHS jack and audio port.

