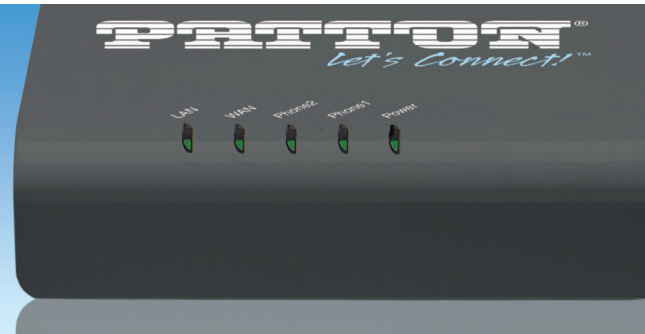


# SmartNode™ Analog Telephone Adapter

## SN100 Series



The SmartNode 100 series are cost effective, feature-rich ATAs that connect one or two standard telephones or fax machines to a computer/network to make VoIP calls using your broadband connection. There's no need to replace your existing analog telephones just because you want to enhance your phone system!

### Analog interfaces

- 1 or 2 FXS
- FXS with FXO for fallback

### Codecs

- G.711-ulaw, G711-alaw, G729, G723
- G.726: 16k / 24k / 32k / 40k bit/s (ADPCM)

### Call Features

- Call Waiting, Call Transfer,
- Call Forward as Busy forward; Non-Answer forward; unconditional forward,
- Do-not-disturb (DND) support
- 3-way conferencing

### Fax Modes

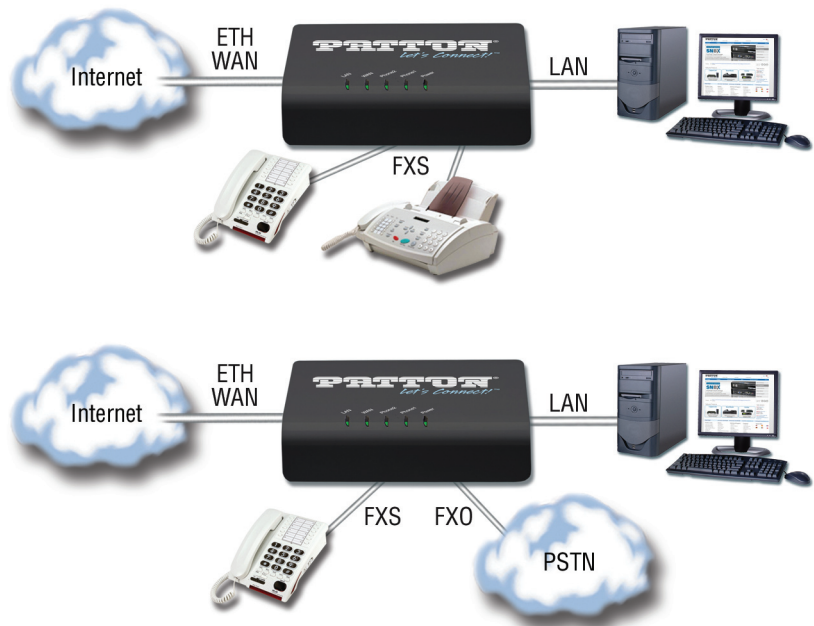
- T.38 relay support
- G.711 pass-through

The SmartNode 100 ATA series are feature-rich analog telephone adapters that enable you to connect standard telephones and make VoIP calls using your broadband connection. There is no need to replace your existing analog telephones just because you want to enhance your phone system.

Easy to install and simple to use, the SN100 series connects standard telephones or fax machines to any Voice over IP (VoIP) service provider.

Well equipped with at least one FXS RJ-11 phone interface, you can speak or fax as with the old fix net telephone. With small design you can easily place the adapter anywhere.

Contact us at [sales@patton.com](mailto:sales@patton.com) for more information.



**Need More Ports?  
Patton has a full line of  
analog VoIP gateways!**



**SN4112S & SN4141  
Analog Gateway**  
2 to 8 FXS/FXO ports



**SN4900 Analog Channel Bank**  
12, 16, 24 or 32 FXS/FXO ports

# SmartNode™ 100 series VoIP ATAs



SN101



SN102

## Specifications\*

### Telephone features

- G.711-ulaw
- G.711-alaw
- G.729
- G.723
- G.726: 16k / 24k / 32k / 40k bit/s (ADPCM)
- Call Waiting
- Call Transfer
- Call Forward as Busy forward; Non-Answer forward; unconditional forward
- Do-not-disturb (DND) support
- 3-way conferencing

### DTMF Function

- RFC2833
- In-Band DTMF
- SIP Info

### Fax Modes

- T.38 relay support
- G.711 pass-through

### IP Specifications

- SIP (RFC 3261)
- SDP (RFC 2327)
- STUN (RFC3489)
- RTP Payload for DTMF Digits (RFC2833)

- SIP Session Timers (RFC 4028)
- DNS SRV (RFC 2782)
- Outbound Proxy Support
- SIP REFER method (RFC 3515)
- Media/Ringing Tone Generation (RFC 3960)
- Message Waiting Indicator (RFC 3842)

### Call Features

- Adjustable Volume
- VAD/Dynamic Jitter Buffer
- Caller ID Generation: DTMF/FSK/NTT CID
- Peer-to-Peer Call by Dial Plan
- Different Country Tone Table Configuration

### Network and Security

- WAN: PPPoE client, DHCP client, Fixed IP Address, PPTP
- QoS: DSCP/VLAN Tag
- PPTP/L2TP VPN Client
- NAT
- Port/IP/MAC Filter

### Configuration/Management

- Web configuration interface; password protected

- Firmware upgrades through HTTP
- SNMP v1/v2 (Customization Project)
- IVR
- TR069 support with STUN
- Auto-Provision by HTTP/TFTP/FTP

### Interfaces

- 1 x WAN 10/100BASE-TX
- 1 x LAN 10/100BASE-TX
- 1 x FXS (SN101)
- 2 x FXS (SN102)
- 1 x FXS/1 x FXO (SN102)
- 1 x Reset switch

### Operating Temperature

- Operating Temperature: 0~40°C
- Storage Humidity: 10~90% relative humidity

### Power

- AC: 100~240 VAC, 50/60 Hz
- DC: 12 VDC/1A

### Dimensions and Weight

- 98mm x 86mm x 29mm
- 100g

### Certifications

- CE, FCC, RoHS



**Patton Electronics Co.**  
7622 Rickenbacker Drive  
Gaithersburg, Maryland 20879, USA  
Phone +1 301 975 1000  
Fax +1 301 869 9293  
E-mail [sales@patton.com](mailto:sales@patton.com)  
Web [www.patton.com](http://www.patton.com)

**Patton-Inalp Networks AG**  
Meriedweg 7  
CH-3172 Niederwangen, Switzerland  
Phone +41 (31) 985 25 25  
Fax +41 (31) 985 25 26  
E-mail [we@patton.com](mailto:we@patton.com)  
Web [www.patton.com](http://www.patton.com)

**Patton Hungary Zrt**  
Gábor Dénes utca 4., Infopark Building C  
Budapest H-1117, Hungary  
Phone +36 1 439 4840  
Fax +36 1 439 4844  
E-mail [ce@patton.com](mailto:ce@patton.com)  
Web [www.patton.com](http://www.patton.com)

07MSN100\_SERIES-DS1