



# Grandstream Networks, Inc.

---

## Connecting GDS3710 with GXV32XX Configuration Guide



## Table of Contents

<b>INTRODUCTION</b> .....	<b>3</b>
<b>PEERING SCENARIO</b> .....	<b>4</b>
Settings Configuration on the GDS3710 Side .....	4
Settings Configuration on the GXV3275 Side .....	6
<b>CONNECTION USING SIP SERVER</b> .....	<b>7</b>
Settings Configuration on the GDS3710 Side .....	7
<i>White List Settings</i> .....	9
Settings Configuration on the GXV32XX Side .....	9

## Table of Figures

Figure 1: GXV3275 peered with the GDS3710.....	4
Figure 2: Door System Settings .....	5
Figure 3: Enable Direct IP Call.....	6
Figure 4: GXV3275 General Settings .....	6
Figure 5: GXV3275 SIP Settings.....	6
Figure 6: GXV32XX Connected to GDS3710 through UCM6XXX .....	7
Figure 7: SIP Basic Settings .....	8
Figure 8: Door System Settings .....	8
Figure 9: White List .....	9
Figure 10: General Settings .....	10
Figure 11: GDS Settings .....	11
Figure 12: Open Door from GVX32xx.....	11



## INTRODUCTION

GDS3710 HD IP Video Door System is a hemispheric IP video door phone and a high-definition IP surveillance. GDS3710 is ideal for monitoring from wall to wall without blind spots. Powered by an advanced Image Sensor Processor (ISP) and state of the art image algorithms, it delivers exceptional performance in all lighting conditions. It contains integrated PoE, LEDs, HD loudspeaker, RFID card reader, motion detector, lighting control switch, Alarm Input/output and more.

The GDS3710 IP video door system features industry-leading SIP/VoIP for 2-way audio and video streaming to smart phones and SIP phones, allowing to receive calls from GDS3710 on associated SIP phones when doorbell is pressed, opening door from the SIP phone, initiate calls from the phone to GDS3710 and get real time audio/video stream.

The GDS3710 can be connected with a SIP phone in 2 different ways, either using peering mode (without a SIP server) or through a SIP server.

This guide describes needed configuration for both peering and using SIP server scenarios. In this guide, GXV3275 will be used as SIP phone and UCM6XXX as SIP server.



## PEERING SCENARIO

We assume that the GDS3710 is installed on a small warehouse at front door and GXV3275 inside to monitor and control the access of the premise. Employees can swipe the RFID card to get in, while visitors need to press the Door Bell to initial video call and the related person at the GXV3275 side need to type the key PIN to open the door remotely to allow the visitors to get in as shown in the figure below.

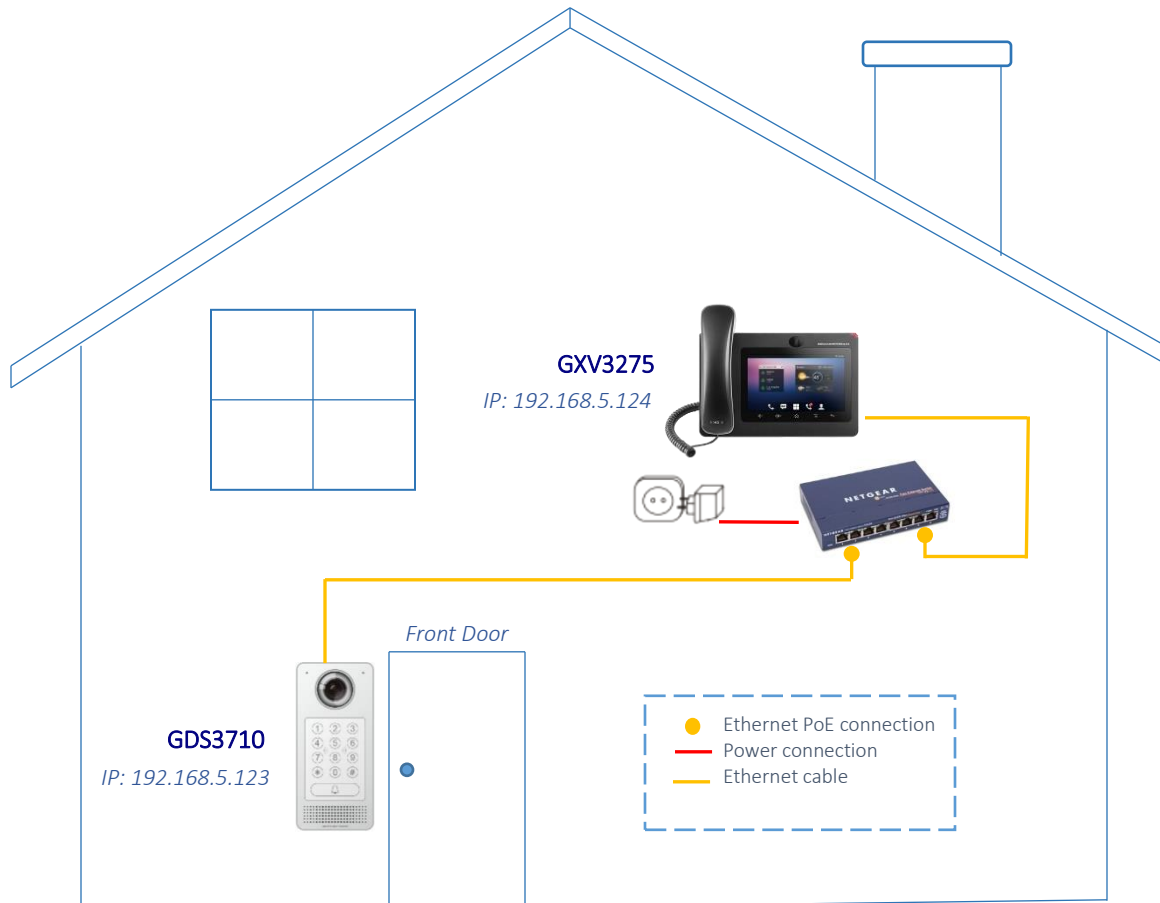


Figure 1: GXV3275 peered with the GDS3710

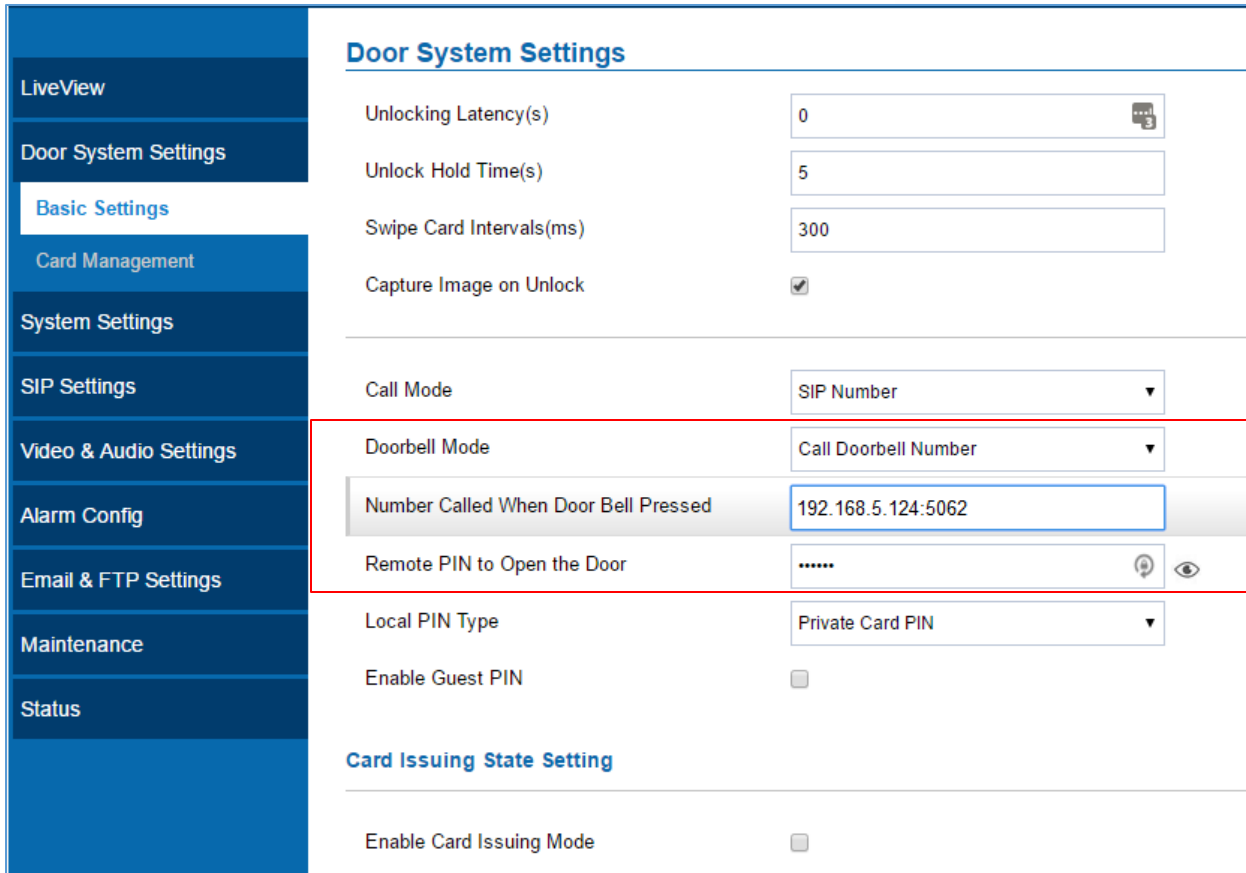
- The IP address used by the GDS3710 is 192.168.5.123.
- The IP address used by the GXV3275 is 192.168.5.124.

### Settings Configuration on the GDS3710 Side

The GDS3710 needs to be configured with the IP address of the GXV3275 and related SIP port, and remote PIN for door opening. (the second account will be used on the GXV3275 for this example, when using third or fourth... accounts, the port number associated to each port is needed 5064,5066...).

Access the GDS3710 webGUI and navigate to **“Door System Settings > Basic Settings”** then set the following as shown on the figure below:






**Figure 2: Door System Settings**

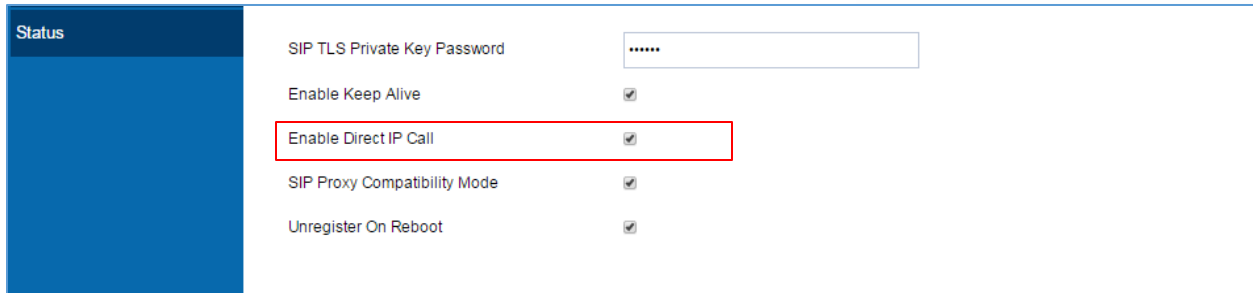
1. Choose the action to be taken when the doorbell is pressed, three options are available:
  - **Call Doorbell Number:** when Doorbell is pressed, a call will be made to the “Number Called When Door Bell Pressed”
  - **Control Doorbell Output (Digital Output 1):** when Door Bell is pressed electronic lock for Output 1 is opened.
  - **Both Of Above:** When selected, both Call Doorbell Number and Control Doorbell Output options are enabled.

In our case we will choose “**Call Doorbell Number**”.

2. Enter the IP address and port number of the GXV3275 which is 192.168.5.124:5062 for the second account on the GXV3275.
3. Enter the “Remote PIN to Open the Door” in order to open the door via DTMF while in active call with the GDS3710.
4. Click  in order to apply changes.

Make sure that the Direct IP Call feature is active from the GDS3710 WebGUI under “**SIP Settings > SIP Advanced Settings**” then click on “**Enable Direct IP Call**”.





**Figure 3: Enable Direct IP Call**

## Settings Configuration on the GXV3275 Side

The GXV3275 related Account need to be set as “Active”, and correct “Local SIP Port” need to be configured at the GDS3710 side. These are the basic settings to make the peering scenario work.

1. On the GXV3275 webGUI navigate under “**Account > General Settings**” and set “**Account Active**” to **Yes**, then click on  and  in order to apply new changes.



**Figure 4: GXV3275 General Settings**

2. Navigate to “**Account > SIP Settings**” and verify that the “**Local SIP Port**” set on the GXV3275 side is the same as the one on the GDS3710.



**Figure 5: GXV3275 SIP Settings**



## CONNECTION USING SIP SERVER

In case of multiple GDS3710 and GXV32XX are available, a SIP server needs to be set in order to communicate between different devices.

The following shows a sample setup.

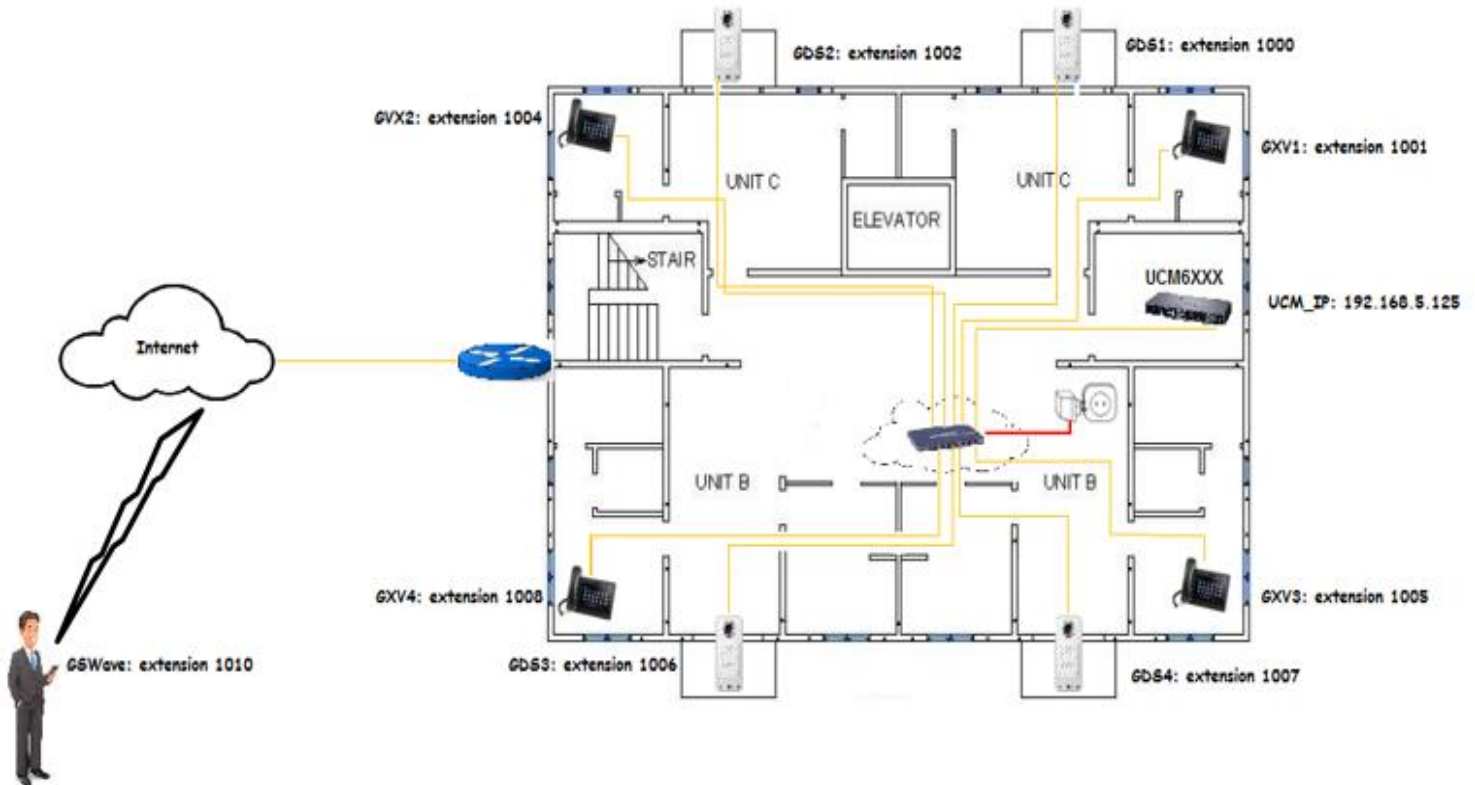


Figure 6: GXV32XX Connected to GDS3710 through UCM6XXX

### Settings Configuration on the GDS3710 Side

A SIP account needs to be registered on the GDS3710 to interact with other devices.

This can be done by entering the GDS3710 WebGUI under “**SIP Settings > SIP Basic Settings**”, then type the SIP account related information and click on [Save](#).



SIP Basic Settings	
SIP Registered	<span style="background-color: green; color: white; padding: 2px;">Online</span>
Account Name	<input type="text" value="GDS"/>
SIP Server	<input type="text" value="192.168.5.125"/>
Outbound Proxy	<input type="text"/>
SIP User ID	<input type="text" value="1000"/>
Authenticate ID	<input type="text" value="1000"/>
TEL URI	<input type="text" value="Disabled"/>
Authenticate Password	<input type="password" value="....."/>

**Figure 7: SIP Basic Settings**

Go to **“Door System Settings > Basic Settings”** then set the following:

1. Doorbell Mode set to **“Call Doorbell Number”**.
2. Number Called When Door Bell Pressed (assuming 1001 is the GXV3275 number).
3. Remote PIN to Open the Door.

The following figure shows an example of the configuration done.

Door System Settings	
Unlocking Latency(s)	<input type="text" value="0"/>
Unlock Hold Time(s)	<input type="text" value="5"/>
Swipe Card Intervals(ms)	<input type="text" value="300"/>
Capture Image on Unlock	<input checked="" type="checkbox"/>
Call Mode	<input type="text" value="SIP Number"/>
Doorbell Mode	<input type="text" value="Call Doorbell Number"/>
Number Called When Door Bell Pressed	<input type="text" value="1001"/>
Remote PIN to Open the Door	<input type="password" value="....."/>
Local PIN Type	<input type="text" value="Private Card PIN"/>
Enable Guest PIN	<input type="checkbox"/>
<b>Card Issuing State Setting</b>	
Enable Card Issuing Mode	<input type="checkbox"/>

**Figure 8: Door System Settings**

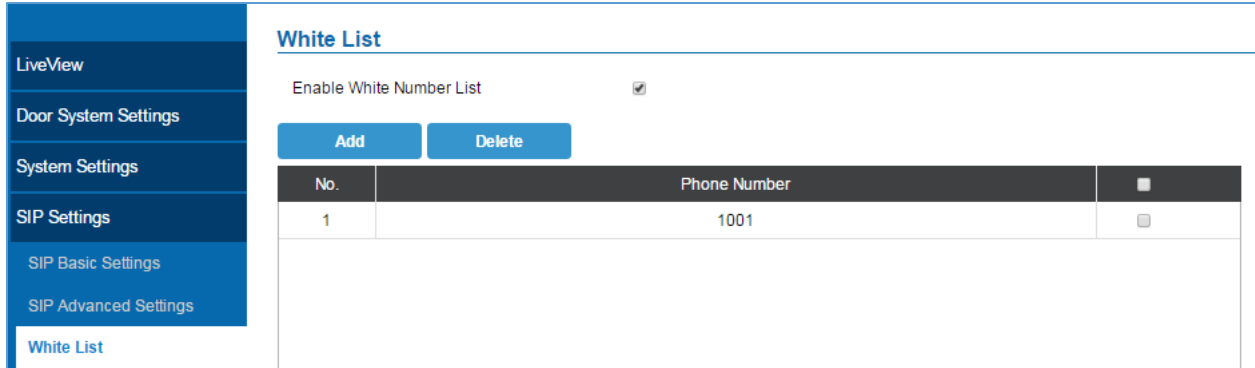




## White List Settings

Any number calling the GDS3710 extension will have its call auto answered. To restrict allowed numbers to call the GDS3710, user needs to navigate under “**SIP Settings > White List**”.

1. Check **Enable White Number List**.
2. Click on **Add** to add numbers allowed to dial the GDS3710.
3. Click **Save** to apply the settings.



No.	Phone Number	
1	1001	<input type="checkbox"/>

Figure 9: White List

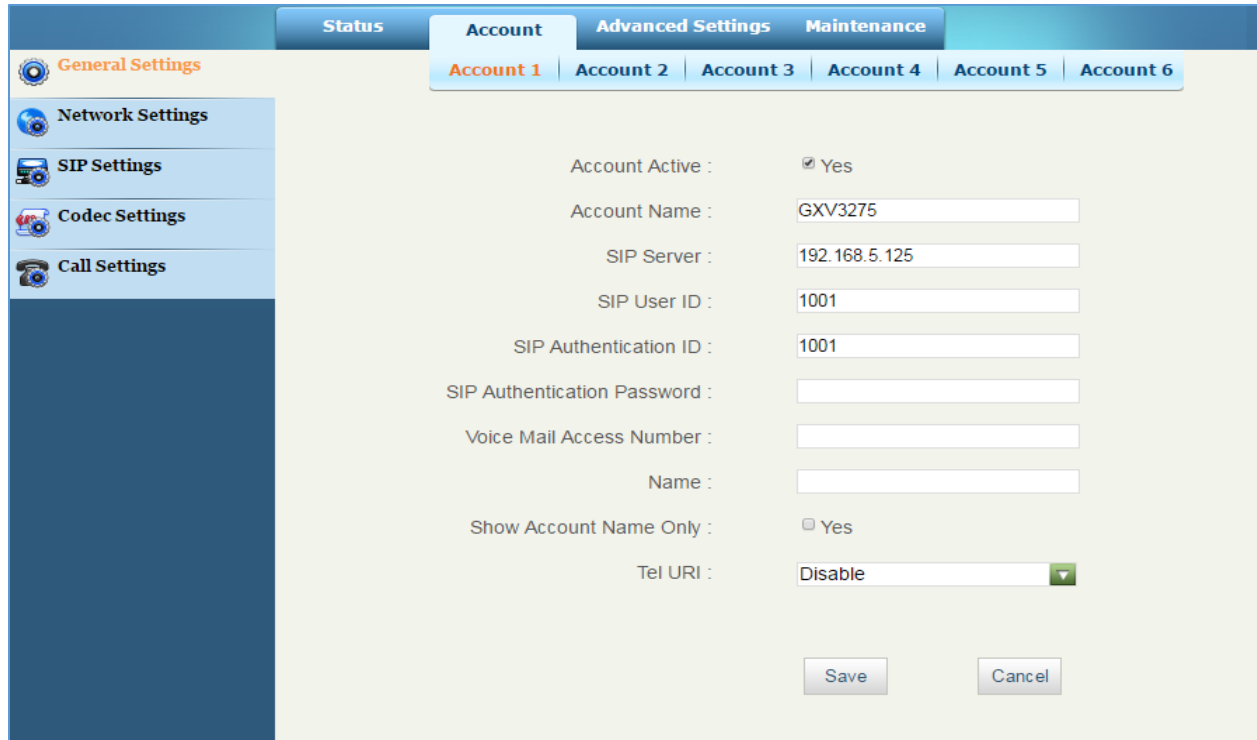
The example above shows that only phone number 1001 is allowed to call the GDS3710.

## Settings Configuration on the GXV32XX Side

A SIP account needs to be registered on the GXV3275 side as well to interact with other devices available on the local network.

This can be done by entering the GXV3275 Web GUI under “**Account > General Settings**”, then type the SIP account related information and click on **Save** and **Apply** to apply new changes.





The screenshot shows the 'General Settings' page for 'Account 1'. The left sidebar contains navigation links for General Settings, Network Settings, SIP Settings, Codec Settings, and Call Settings. The main content area includes the following fields:

- Account Active:  Yes
- Account Name: GXV3275
- SIP Server: 192.168.5.125
- SIP User ID: 1001
- SIP Authentication ID: 1001
- SIP Authentication Password: [Empty field]
- Voice Mail Access Number: [Empty field]
- Name: [Empty field]
- Show Account Name Only:  Yes
- Tel URI: Disable

Buttons for 'Save' and 'Cancel' are located at the bottom right of the form.

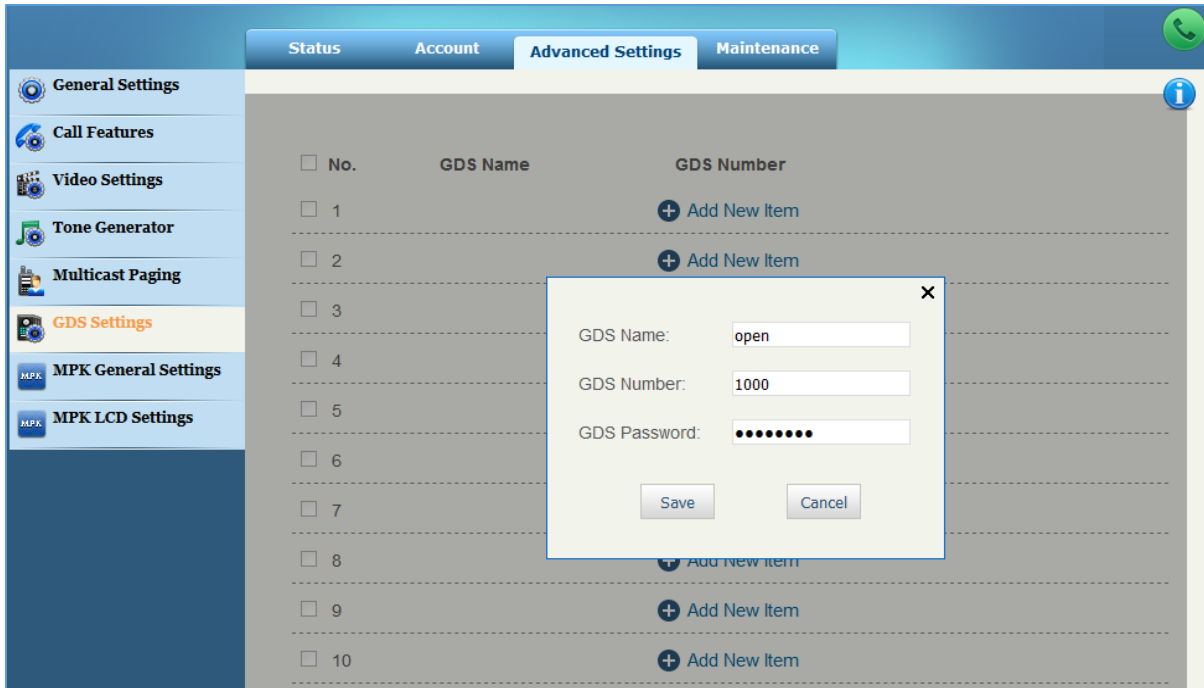
**Figure 10: General Settings**

Users could configure “Remote PIN to Open the Door” on the GXV32XX WebGUI to open the door with a single click.

This can be done from the GXV32XX web UI -> **Advanced Settings** -> **GDS Settings** and set the following:

1. Click on “Add New Item”
2. Enter the “GDS Name”, it can be any name to identify the GDS3710, in our case its “open”.
3. Enter the “GDS Number”, in our case its “1000”.
4. Enter the “GDS Password” which is the password set on “Remote PIN to Open the Door” on the GDS3710.





**Figure 11: GDS Settings**

Once the user press the ring button on the GDS3710, an INVITE will be sent to the GXV phone, when the user on the GXV side answer the call using “Video Answer”, the GDS3710 stream will be played on the GVX phone and a button will appear on the left side panel named “open” which is the “GDS Name”. If users press the “open” button, the DTMF code for “Remote PIN for Open the Door” will be sent to the GDS3710 in order to open the door as shown below.



**Figure 12: Open Door from GXV32xx**

The GXV32XX supports up to 10 GDS3710 devices.

