

# Jabra Noise Guide

# Jabra Noise Guide

## QUICK START



Table stand



## Accessories for Jabra Noise Guide

- Wall mounting kit  
Product number 4005
- Table stand  
Product number 4006

Wall mounting kit



soundear@soundear.com  
www.soundear.com



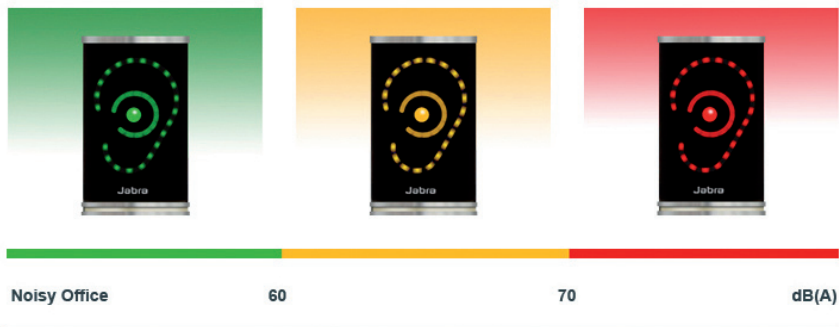
# CONGRATULATIONS ON YOUR NEW JABRA NOISE GUIDE



1. Jabra Noise Guide
2. 8 GB USB key with software
3. Power adaptor with EU, UK and US plugs
4. USB cable for connecting the Noise Guide to the power adaptor or a PC

## PRE SETTING

Your Noise Guide is pre-set for "Noisy Office". You can change settings in the software.



- Green Ear : < 60 dB
- Yellow Ear : 60 – 70 dB
- Red Ear : > 70 dB

## SOFTWARE

The software used for configuration and viewing measurements is installed with the included USB-key.

When the software installation is completed, open the software and click on "User Manual" in the left menu to download the user manual.

In order to fully understand the features and possibilities of Jabra Noise Guide, we advise you to read the user manual carefully before you start using your Jabra Noise Guide.

You can also download the software and the user manual from our web site:

[www.soundear.com/downloads](http://www.soundear.com/downloads)

To ensure that your software version is always up-to date, we strongly advise you to check the web site for the latest versions frequently.

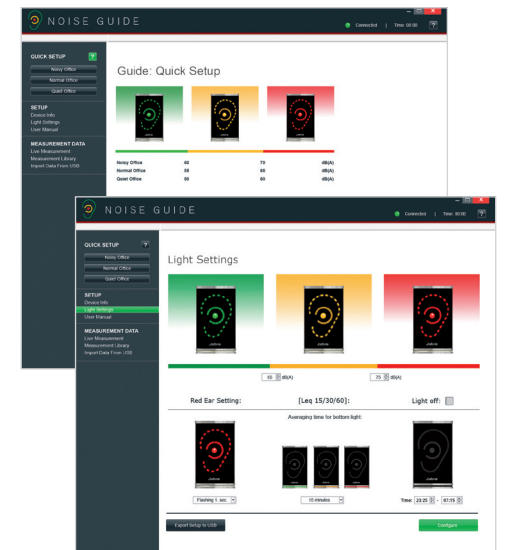
**PLEASE NOTE!** To set the internal clock in Jabra Noise Guide, connect the device to your PC with the USB cable. The time with then synchronize with your PC.

If you have questions or comments, please feel free to contact us on:

[soundear@soundear.com](mailto:soundear@soundear.com)



1. Insert USB key to download log data from Jabra Noise Guide and offline configuration of the device.
2. USB entrance for connecting the Noise Guide to the power adaptor or a PC.



Jabra Noise Guide. software.