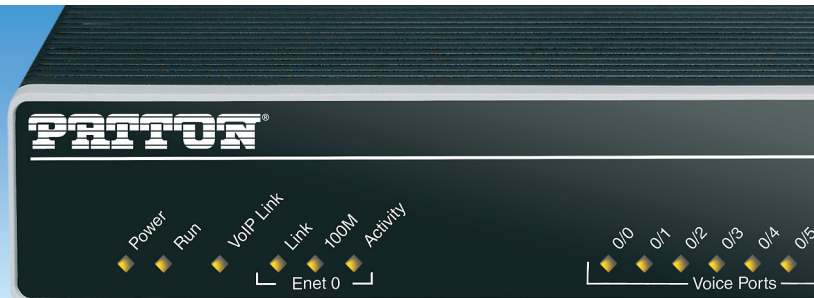


SmartNode™ FXS VoIP Gateway

Model 4141



The SmartNode 4141 Series of VoIP Media Gateways support up to eight telephone connections integrating legacy equipment into a UCC environment. High quality voice and reliable fax over any IP network. All-IP does not end when analog terminals have to be integrated. Security and quality guaranteed.

8 FXS Analog interfaces

2, 4 or 8 FXS interfaces, supporting simultaneous voice or fax calls.

Advanced Local Call Switching

Virtual interfaces and routing tables provide industry leading flexibility in call handling programming.

Local call switching, soft fallback to alternative routes.

Simultaneously connects to multiple SIP services/IP PBXs.

Network Monitoring

Embedded PacketSmart Agent for network monitoring and assessment 24x7.**

Easy Management & Provisioning

WebWizard, HTTPS zero touch provisioning, SNMP, command line interface.

Automated mass provisioning with dual Software image for efficient large-scale deployments.

Proprietary OS

Utilizes proprietary Trinity™ software for enhanced security.

Full VoIP protocol support

SIPv2, SIPv2 over TLS, T.38, G.722 HD voice, RTP security with SRTP, fax and modem bypass, DTMF relay.

Ease of Use

Patton's WebWizard is a time-saving tool for a fast and reliable installation.

Outstanding Interoperability

Interoperable for voice and T.38 fax with leading SIP service providers, softswitch vendors, and major IP PBX manufacturers.

Why SmartNode?

- Patton Quality
- Swiss Engineered—Made in the USA
- Unrivaled Customer Support
- FREE Software Upgrades

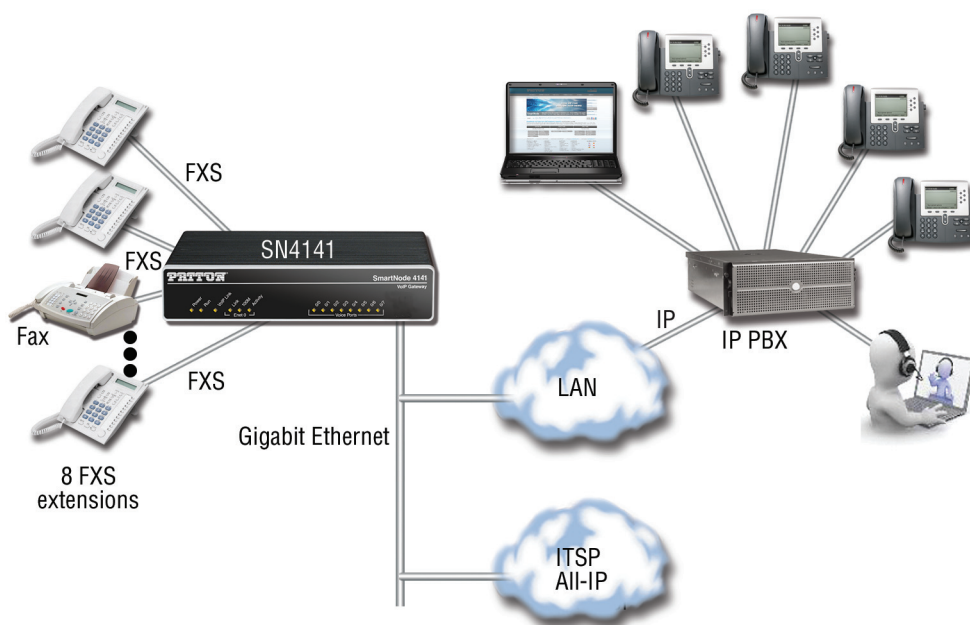
The SmartNode 4141 Series of VoIP Media Gateways support up to eight phone or fax calls. The SN4141 is the perfect choice for All-IP applications where either old, non-replaceable telephones have to be integrated into a UCC environment, or for good old fax devices to be migrated to the next-generation network infrastructure.

Patton's SmartNode 4141 Series delivers the legacy phone interfaces, service transparency, and flexible integration required for All-IP networks.

Visit www.patton.com/smartnode for more information.

Typical Application

In All-IP networks as well as during the migration to the next generation communication network, legacy Telephone equipment will remain for quite some years. The SmartNode 4141 Series will be responsible integrating this equipment at a very low cost for the enterprise. With its modem and fax signal to VoIP conversion capabilities it also helps to solve problems integrating PoS, metering systems, elevator phones, etc., into an All-IP environment.



PATTON
Let's Connect!™

Specifications subject to change without notice | * Depending on model | ** Licensed Feature at additional charge

SmartNode™ Model 4141 Multi-port FXS VoIP Gateway



Specifications

Capacity

Up to 8 simultaneous low-bandwidth voice or HD calls with SRTP or T.38 fax calls

Voice Signaling

- SIPv2 / SIPv2 over TLS (B2BUA capable, multi-instance, simultaneous support of multiple registrars and direct IP dialing)
- SIP call transfer, redirect
- DTMF in-band & out-of-band
- All tones programmable (dial, ringing, busy)

Voice Processing

- G.722
- G.711m/A-law
- G.723.1 (6.4 kbps)
- G.729, 729a, 729ab (8 kbps)
- G.726 (16, 24, 32, 40 Kbps)
- G.168-2004 echo cancellation (128 ms)
- Up to 4 simultaneous low-bandwidth voice or T.38 fax calls
- Up to 5 HD calls with SRTP
- Up to 256 SIP to SIP calls***
- Up to 4 SIP transcoded calls**
- Silence suppression and comfort noise
- Adaptive and configurable dejitter buffer

- Configurable RTP packet length

Call Switching and Services

- Regular expression based call routing and number manipulation
- Number blocking
- Short-dialing
- Digit collection, distribution and hunt groups
- Transparent line extension
- Fallback Routing: Soft fall back to alternative route(s)

FXS Connectivity

- 2-wire Loopstart on RJ-11/12
- EuroPOTS (ETSI EG201188)
- Programmable AC impedance, feeding, ring and onhook voltage
- Caller-ID FSK and ITU V.23/Bell 202 generation
- Long Reach FXS—6.5 km @ 3REN load
- Secondary Surge Protection (optional)

Connectivity

- One 10/100/1000Base-T Ethernet port
- Auto-MDIX
- DHCP Client
- PPPoE Client (multi-session)

- IP Multi-Netting, VLAN, Secondary IP
- IPv4, Basic IPv6
- ICMP
- Dynamic and static NAT and NATP
- ACL, Stateful Firewall
- DNS, DynDNS
- DHCP Server
- SNTP Client

Quality of Service

- PacketSmart™ Network Assessment & Monitoring**
- Voice priority, DownStreamQoS™
- Traffic Management, shaping policing
- IEEE 802.1p, IEEE 802.1Q, 4096 VLANs (Tag insertion/deletion), TOS, DiffServ Labeling

Management

- Web/HTTPs, CLI with local console and remote Telnet access
- Fully Documented CLI
- Telnet and HTTPs access
- TFTP, HTTP, HTTPS configuration up- and download
- TFTP, HTTP, HTTPS firmware upgrade (Dual Firmware image)
- SNMPv3 agent

- Separate config domain (LAN side config and WAN side config)
- MIB II and private MIB
- Built-in diagnostic tools
- Secure Auto-Provisioning with built in root CA

Power Consumption

< 10W

Packaging

Desktop/Wall-mount plastic chassis

Dimensions

8.2W x 1.3H x 6.5D in.
(20.8W x 3.4H x 16.5D cm)

Weight

< 450g (15.9 oz)

Environment

- Operating temperature: 32 to 104°F (0 to 40°C)
- Operating humidity: up to 90%, non-condensing)

Safety & Compliance

- EMC compliance: EN55022 and EN55024
- Safety compliance: EN 60950
- CE compliance
- FCC Part 15 Class A
- TBR21 (FXS)
- RoHS
- ITU-T K.21 protection (FXS ports)**

Ordering Info

Obtain ordering info for this product by using the QR code at right or by contacting:

- web: http://www.patton.com/products/product_detail.asp?id=540&tab=Ordering
- email: sales@patton.com
- tel: +1 301.975.1000



Specifications subject to change without notice | * Depending on model | ** Licensed Feature at additional charge | *** Supports up to 256 SIP-to-SIP sessions under ideal conditions. Transcoding, debugging, and/or IP routing reduce processing capacity.



Patton Electronics Co.
7622 Rickenbacker Drive
Gaithersburg, Maryland 20879, USA
Phone +1 301 975 1000
Fax +1 301 869 9293
E-mail sales@patton.com
Web www.patton.com

Patton-Inalp Networks AG
Meriedweg 7
CH-3172 Niederwangen, Switzerland
Phone +41 (31) 985 25 25
Fax +41 (31) 985 25 26
E-mail we@patton.com
Web www.patton.com

Patton Hungary Zrt
Gábor Dénes utca 4., Infopark Building C
Budapest H-1117, Hungary
Phone +36 1 439 4840
Fax +36 1 439 4844
E-mail ce@patton.com
Web www.patton.com

07MSN4141-DS1

Patton is a registered trademark, and is a trademark of Patton Electronics Company in the United States and other countries.